

Anti-MCM6 antibody (562-821) (STJ24526)

STJ24526

GENERAL INFORMATION

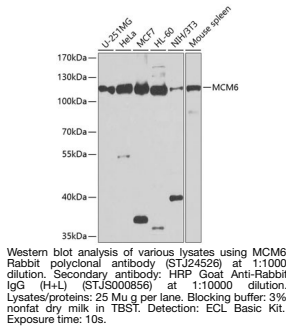
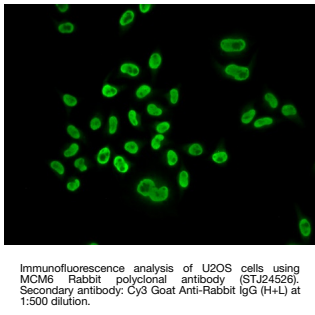
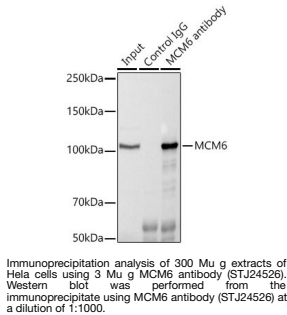
Product Type	Primary antibodies
Short Description	
Applications	WB/IF/ICC/IP/ELISA
Host/Source	Rabbit
Reactivity	Human/Mouse/Rat

PRODUCT PROPERTIES

Clonality	Polyclonal
Clone ID	
Concentration	Lot specific
Conjugation	Unconjugated
Purification	Affinity purification
Dilution Range	WB:1:500-1:2000 IF/ICC:1:50-1:200 IP:0.5 Mu g-4 Mu g antibody for 200 Mu g-400 Mu g extracts of whole cells ELISA:Recommended starting concentration is 1 Mu g/mL. Please optimize the concentration based on your specific assay requirements
Formulation	PBS with 0.02% Sodium Azide, 50% Glycerol, pH 7.3.
Isotype	IgG
Storage Instruction	Store at-20°C for up to 1 year from the date of receipt, and avoid repeat freeze-thaw cycles.

TARGET INFORMATION

Gene ID	4175
Gene Symbol	MCM6
Uniprot ID	MCM6_HUMAN
Immunogen	
Region	562-821
Specificity	Recombinant fusion protein containing a sequence corresponding to amino acids 562-821 of human MCM6 (NP_005906.2).
Immunogen Sequence	SIDRVYSLDDIRRYLLFARQ FKPKISKESEDFIVEQYKHL RQRDGSVGTKSSWRITVRQL ESMIRLSEAMARMHCCDEVQ PKHVKEAFRLLNKSIIRVET PDVNLQEEEEIQMEVDEGAG GINGHADSPAPVNGINGYNE DINQESAPKASRLRGFSEYC RISNLIVLHLRKVEEEEDS ALKRSELVNWYLKEIESEID SEEELINKRIIEKVIHRLT HYDHLIELTQAGLKGSTE



This product is suitable for in-vitro studies under the RESEARCH USE ONLY [RUO] licence. This product must not be used as for diagnostic or other medical purposes.
St John's Laboratory Ltd, Knowledge Dock Business Centre, University Way, London, E16 2RD | Tel: 0208 223 3081