

Anti-MCM3 antibody (1-295) (STJ24524)
STJ24524

GENERAL INFORMATION

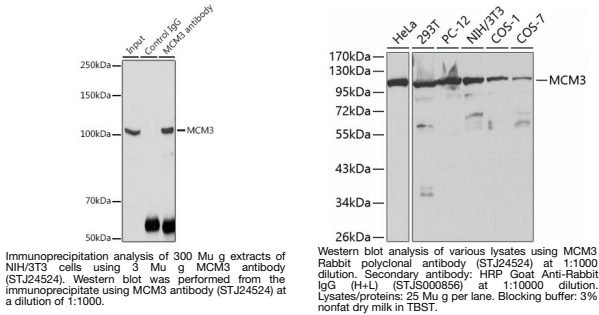
Product Type	Primary antibodies
Short Description	
Applications	WB/IP/ELISA
Host/Source	Rabbit
Reactivity	Human/Mouse/Rat

PRODUCT PROPERTIES

Clonality	Polyclonal
Clone ID	
Concentration	Lot specific
Conjugation	Unconjugated
Purification	Affinity purification
Dilution	WB:1:500-1:2000
Range	IP:0.5 Mu g-4 Mu g antibody for 200 Mu g-400 Mu g extracts of whole cells ELISA:Recommended starting concentration is 1 Mu g/mL. Please optimize the concentration based on your specific assay requirements.
Formulation	PBS with 0.02% Sodium Azide, 50% Glycerol, pH 7.3.
Isotype	IgG
Storage Instruction	Store at -20°C for up to 1 year from the date of receipt, and avoid repeat freeze-thaw cycles.

TARGET INFORMATION

Gene ID	4172
Gene Symbol	MCM3
Uniprot ID	MCM3_HUMAN
Immunogen	
Immunogen Region	1-295
Specificity	Recombinant fusion protein containing a sequence corresponding to amino acids 1-295 of human MCM3 (NP_002379.2).
Immunogen Sequence	MAGTVVLDDELREAQRDYL DFLDDEEDQGIYQSKVRELI SDNQYRLIVNVNDLRRKNEK RANRLNNAFEELVAFQRAL KDFVASIDATYAKQYEEFYV GLEGSFGSKHVSPTLTSCF LSCVVCVEGIVTKCSLVRPK VVRSVHYCPATKKTIERRYS DLTTLVAFPSVVYPTKDEE NNPLETEYGLSVYKDHTIT IQEMPEKAPAGQLPRSDVI LDDDLVDKAKPGDRVQVVG



This product is suitable for in-vitro studies under the RESEARCH USE ONLY [RUO] licence. This product must not be used as for diagnostic or other medical purposes.
St John's Laboratory Ltd, Knowledge Dock Business Centre, University Way, London, E16 2RD | Tel: 0208 223 3081