

Anti-MAPRE1 antibody (134-268) (STJ24498)
STJ24498

GENERAL INFORMATION

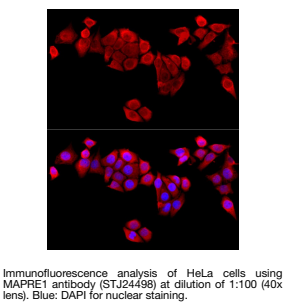
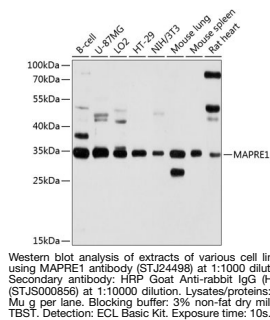
Product Type	Primary antibodies
Short Description	
Applications	WB/IF/ICC/ELISA
Host/Source	Rabbit
Reactivity	Human/Mouse/Rat

PRODUCT PROPERTIES

Clonality	Polyclonal
Clone ID	
Concentration	Lot specific
Conjugation	Unconjugated
Purification	Affinity purification
Dilution Range	WB:1:500-1:2000 IF/ICC:1:50-1:200 ELISA:Recommended starting concentration is 1 Mu g/mL. Please optimize the concentration based on your specific assay requirements.
Formulation	PBS with 0.01% Thimerosal, 50% Glycerol, pH 7.3.
Isotype	IgG
Storage Instruction	Store at -20°C for up to 1 year from the date of receipt, and avoid repeat freeze-thaw cycles.

TARGET INFORMATION

Gene ID	22919
Gene Symbol	MAPRE1
Uniprot ID	MARE1_HUMAN
Immunogen	
Immunogen Region	134-268
Specificity	Recombinant fusion protein containing a sequence corresponding to amino acids 134-268 of human MAPRE1 (NP_036457.1).
Immunogen Sequence	ETAVAPSLVAPALNPKPKPL TSSSAAPQRPISRTQRTAAAP KAGPGVVRKNPGVGNGDDEA AELMQQVNVKLKLTVEDLEKE RDPYFGKLRNIELICQENEG ENDPVLQRIVDILYATDEGF VIPDEGGPQEEQEEY



This product is suitable for in-vitro studies under the RESEARCH USE ONLY [RUO] licence. This product must not be used as for diagnostic or other medical purposes.
St John's Laboratory Ltd, Knowledge Dock Business Centre, University Way, London, E16 2RD | Tel: 0208 223 3081