

Anti-MAPK3 antibody (1-378) (STJ24487)
STJ24487

GENERAL INFORMATION

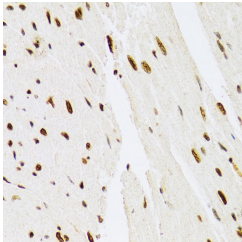
Product Type	Primary antibodies
Short Description	
Applications	WB/IHC-P/IF/ICC/ELISA
Host/Source	Rabbit
Reactivity	Human/Mouse/Rat

PRODUCT PROPERTIES

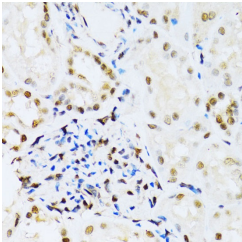
Clonality	Polyclonal
Clone ID	
Concentration	Lot specific
Conjugation	Unconjugated
Purification	Affinity purification
Dilution Range	WB:1:500-1:2000 IHC-P:1:50-1:200 IF/ICC:1:50-1:200 ELISA:Recommended starting concentration is 1 Mu g/mL. Please optimize the concentration based on your specific assay requirements.
Formulation	PBS with 0.02% Sodium Azide, 50% Glycerol, pH 7.3.
Isotype	IgG
Storage Instruction	Store at -20°C for up to 1 year from the date of receipt, and avoid repeat freeze-thaw cycles.

TARGET INFORMATION

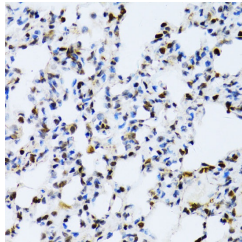
Gene ID	5595
Gene Symbol	MAPK3
Uniprot ID	MK03_HUMAN
Immunogen	
Immunogen Region	1-378
Specificity	Recombinant fusion protein containing a sequence corresponding to amino acids 1-100 of human ERK1 (NP_002737.2).
Immunogen Sequence	MAAAAQGGGGGEPRTGVP GPGVPGEVEMVKGPFDVGP RYTLQYIGEGAYGMVSSAY DHVRKTRVAIKKISPFHQTYCQRTLREIQILLRFRHENV



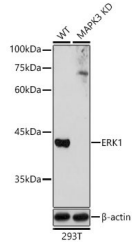
Immunohistochemistry analysis of ERK1 in paraffin-embedded mouse heart using [KD Validated] ERK1 Rabbit polyclonal antibody (STJ24487) at dilution of 1:100 (40x lens). Perform microwave antigen retrieval with 10 mM PBS buffer pH 7.2 before commencing with immunohistochemistry staining protocol.



Immunohistochemistry analysis of ERK1 in paraffin-embedded human kidney using [KD Validated] ERK1 Rabbit polyclonal antibody (STJ24487) at dilution of 1:100 (40x lens). Perform microwave antigen retrieval with 10 mM PBS buffer pH 7.2 before commencing with immunohistochemistry staining protocol.



Immunohistochemistry analysis of ERK1 in paraffin-embedded rat lung using [KD Validated] ERK1 Rabbit polyclonal antibody (STJ24487) at dilution of 1:100 (40x lens). Perform microwave antigen retrieval with 10 mM PBS buffer pH 7.2 before commencing with immunohistochemistry staining protocol.



Western blot analysis of lysates from wild type (WT) and ERK1 knockdown (KD) 293T cells, using [KD Validated] ERK1 Rabbit polyclonal antibody (STJ24487) at 1:1000 dilution. Secondary antibody: HRP Goat Anti-Rabbit IgG (H+L) (STJS000858) at 1:10000 dilution. Lysates/proteins: 25 Mu g per lane. Blocking buffer: 3% nonfat dry milk in TBST. Detection: ECL Basic Kit. Exposure time: 10s.