

Anti-Map2 antibody (1510-1827) (STJ24462)

STJ24462

GENERAL INFORMATION

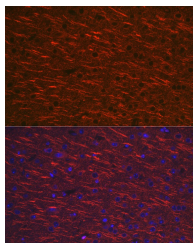
Product Type	Primary antibodies
Short Description	
Applications	WB/IHC-P/IF/ICC/ELISA
Host/Source	Rabbit
Reactivity	Human/Mouse/Rat

PRODUCT PROPERTIES

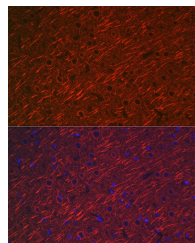
Clonality	Polyclonal
Clone ID	
Concentration	Lot specific
Conjugation	Unconjugated
Purification	Affinity purification
Dilution	WB:1:1000-1:5000
Range	IHC-P:1:50-1:200 IF/ICC:1:50-1:200 ELISA:Recommended starting concentration is 1 μ g/mL. Please optimize the concentration based on your specific assay requirements.
Formulation	PBS with 0.05% Proclin300, 50% Glycerol, pH 7.3.
Isotype	IgG
Storage	Store at -20°C for up to 1 year from the date of receipt, and avoid repeat freeze-thaw cycles.
Instruction	

TARGET INFORMATION

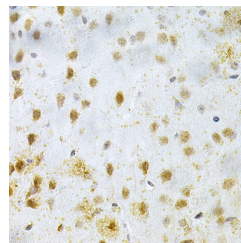
Gene ID	4133
Gene Symbol	MAP2
Uniprot ID	MTAP2_HUMAN
Immunogen	
Region	1510-1827
Specificity	Recombinant fusion protein containing a sequence corresponding to amino acids 1510-1650 of human MAP2 (NP_002365.3).
Immunogen Sequence	GGESALAPSVFKQAKDKVSD GVTKSPEKRSSLPRPSSILP PRRGVSGDRDENSFSLNSSI SSSARRTTTRSEPIRRAGKSG TSTPTTPGSTAITPGTPPSY SSRTPTGTPGTPSYRTPHTP GTPKSAILVPSEKKVAIIRT P



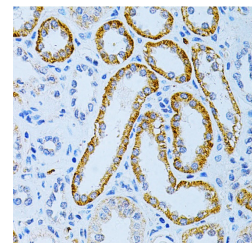
Immunofluorescence analysis of mouse brain cells using MAP2 Rabbit polyclonal antibody (STJ24462) at dilution of 1:100 (40x lens). Blue: DAPI for nuclear staining.



Immunofluorescence analysis of rat brain cells using MAP2 Rabbit polyclonal antibody (STJ24462) at dilution of 1:100 (40x lens). Blue: DAPI for nuclear staining.



Immunohistochemistry analysis of paraffin-embedded mouse brain using MAP2 Antibody (STJ24462) at dilution of 1:200 (40x lens). Perform microwave antigen retrieval with 10 mM PBS buffer pH 7.2 before commencing with immunohistochemistry staining protocol.



Immunohistochemistry analysis of paraffin-embedded human kidney cancer using MAP2 Antibody (STJ24462) at dilution of 1:200 (40x lens). Perform microwave antigen retrieval with 10 mM PBS buffer pH 7.2 before commencing with immunohistochemistry staining protocol.

This product is suitable for in-vitro studies under the RESEARCH USE ONLY [RUO] licence. This product must not be used as for diagnostic or other medical purposes.
St John's Laboratory Ltd, Knowledge Dock Business Centre, University Way, London, E16 2RD | Tel: 0208 223 3081