

Anti-LRPAP1 antibody (100-200) (STJ24426)

STJ24426

GENERAL INFORMATION

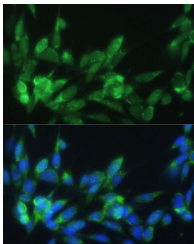
Product Type	Primary antibodies
Short Description	
Applications	WB/IHC-P/IF/ICC/ELISA
Host/Source	Rabbit
Reactivity	Human/Mouse/Rat

PRODUCT PROPERTIES

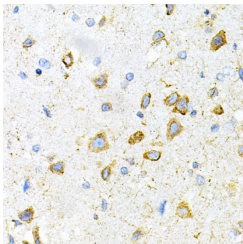
Clonality	Polyclonal
Clone ID	
Concentration	Lot specific
Conjugation	Unconjugated
Purification	Affinity purification
Dilution Range	WB:1:500-1:2000 IHC-P:1:50-1:100 IF/ICC:1:50-1:100 ELISA:Recommended starting concentration is 1 Mu g/mL. Please optimize the concentration based on your specific assay requirements.
Formulation	PBS with 0.01% Thimerosal, 50% Glycerol, pH 7.3.
Isotype	IgG
Storage	Store at -20°C for up to 1 year from the date of receipt, and avoid repeat freeze-thaw cycles.
Instruction	

TARGET INFORMATION

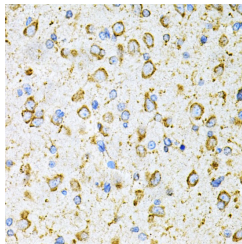
Gene ID	4043
Gene Symbol	LRPAP1
Uniprot ID	AMRP_HUMAN
Immunogen	
Immunogen Region	100-200
Specificity	A synthetic peptide corresponding to a sequence within amino acids 100-200 of human LRPAP1 (P30533).
Immunogen Sequence	GLDEDGEKEARLIRNLNVIL AKYGLDGKKDARQVTSNLS GTQEDGLDDPRLEKLWHKAK TSGKFSGEELDKLWREFLHH KEKVHEYNVLLETLSRTEEI H



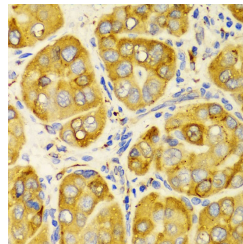
Immunofluorescence analysis of NIH-3T3 cells using LRPAP1 Rabbit polyclonal antibody (STJ24426) at dilution of 1:100 (40x lens). Secondary antibody: Cy3 Goat Anti-Rabbit IgG (H+L) at 1:500 dilution. Blue: DAPI for nuclear staining.



Immunohistochemistry analysis of LRPAP1 in paraffin-embedded mouse brain using LRPAP1 Rabbit polyclonal antibody (STJ24426) at dilution of 1:200 (40x lens). Perform microwave antigen retrieval with 10 mM PBS buffer pH 7.2 before commencing with immunohistochemistry staining protocol.



Immunohistochemistry analysis of LRPAP1 in paraffin-embedded rat brain using LRPAP1 Rabbit polyclonal antibody (STJ24426) at dilution of 1:200 (40x lens). Perform microwave antigen retrieval with 10 mM PBS buffer pH 7.2 before commencing with immunohistochemistry staining protocol.



Immunohistochemistry analysis of LRPAP1 in paraffin-embedded human liver cancer using LRPAP1 Rabbit polyclonal antibody (STJ24426) at dilution of 1:100 (40x lens). Perform microwave antigen retrieval with 10 mM PBS buffer pH 7.2 before commencing with immunohistochemistry staining protocol.

This product is suitable for in-vitro studies under the RESEARCH USE ONLY [RUO] licence. This product must not be used as for diagnostic or other medical purposes.
St John's Laboratory Ltd, Knowledge Dock Business Centre, University Way, London, E16 2RD | Tel: 0208 223 3081