

Anti-LRP2 antibody (4446-4655) (STJ24423)

STJ24423

GENERAL INFORMATION

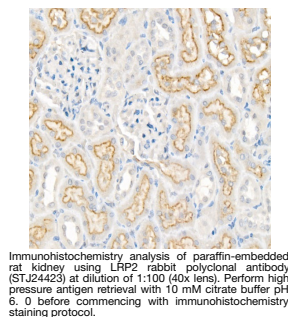
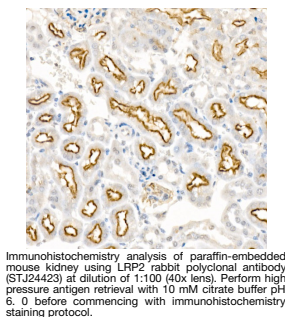
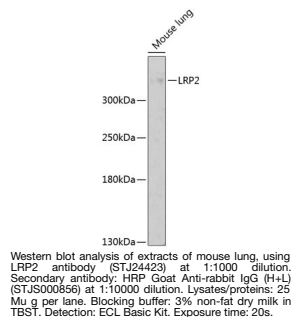
Product Type	Primary antibodies
Short Description	
Applications	WB/IHC-P/IF/ICC/ELISA
Host/Source	Rabbit
Reactivity	Human/Mouse/Rat

PRODUCT PROPERTIES

Clonality	Polyclonal
Clone ID	
Concentration	Lot specific
Conjugation	Unconjugated
Purification	Affinity purification
Dilution	WB: 1:200-1:1000
Range	IHC-P: 1:20-1:100 IF/ICC: 1:50-1:200 ELISA: Recommended starting concentration is 1 µg/mL. Please optimize the concentration based on your specific assay requirements.
Formulation	PBS with 0.09% Sodium Azide, 50% Glycerol, pH 7.3.
Isotype	IgG
Storage	Store at -20°C for up to 1 year from the date of receipt, and avoid repeat freeze-thaw cycles.
Instruction	

TARGET INFORMATION

Gene ID	4036
Gene Symbol	LRP2
Uniprot ID	LRP2_HUMAN
Immunogen	
Region	4446-4655
Specificity	Recombinant fusion protein containing a sequence corresponding to amino acids 4446-4655 of human LRP2 (NP_004516.2).
Immunogen Sequence	FHYRRTGSLPALPKLP SLS SLVKPSENGNGVTFRSGADL NMDIGVSGFGFPETAIDRSMA MSED FVMEMGKQPIIFENPM YSARDSAVKVVQPIQVT VSE NVDNKNY GSPINPSEIVPET NPTSPAADGTQVTKWNLFKR KSKQTTNFENPIAQMENEQ KESVAATPPSPSLPAKPKP PSRRDPTPTYSATEDTFKDT ANLVKEDSEV



This product is suitable for in-vitro studies under the RESEARCH USE ONLY [RUO] licence. This product must not be used as for diagnostic or other medical purposes.
St John's Laboratory Ltd, Knowledge Dock Business Centre, University Way, London, E16 2RD | Tel: 0208 223 3081