

Anti-KPNA1 antibody (1-300) (STJ24340)

STJ24340

GENERAL INFORMATION

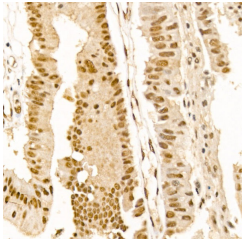
Product Type	Primary antibodies
Short Description	
Applications	WB/IHC-P/ELISA
Host/Source	Rabbit
Reactivity	Human/Mouse/Rat

PRODUCT PROPERTIES

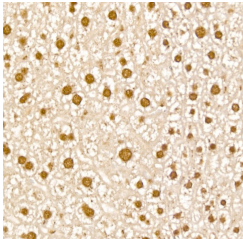
Clonality	Polyclonal
Clone ID	
Concentration	Lot specific
Conjugation	Unconjugated
Purification	Affinity purification
Dilution Range	WB: 1:500-1:1000 IHC-P: 1:50-1:200 ELISA: Recommended starting concentration is 1 µg/mL. Please optimize the concentration based on your specific assay requirements.
Formulation	PBS with 0.02% Sodium Azide, 50% Glycerol, pH 7.3.
Isotype	IgG
Storage Instruction	Store at -20°C for up to 1 year from the date of receipt, and avoid repeat freeze-thaw cycles.

TARGET INFORMATION

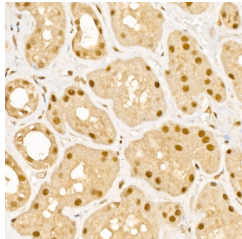
Gene ID	3836
Gene Symbol	KPNA1
Uniprot ID	IMA5_HUMAN
Immunogen	
Immunogen Region	1-300
Specificity	Recombinant fusion protein containing a sequence corresponding to amino acids 1-300 of human KPNA1 (NP_002255.3).
Immunogen Sequence	MTTPGKENFRLKSYKNKSLN PDEMRRRREEEGLQRLKQKR EEQLFKRRNVATAEEETEEE VMSDGGFHEAQISNMEMAPG GVITSDMIEMIFSKSPEQQL SATQKFRKLLSKEPNPPIDE VISTPGVVARFVEFLKRKEN CTLQFESAWVLNIAAGNSL QTRIVIQAGAVPIFIELLS EFEDVQEQAVWALGNIAGDS TMCRDYVLDCLNLPPLLQLF SKQNRLTMTRNAVWALSNL



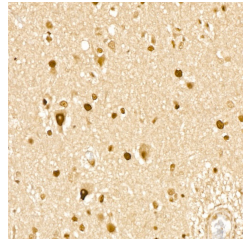
Immunohistochemistry analysis of KPNA1 in paraffin-embedded human colon carcinoma tissue using KPNA1 Rabbit polyclonal antibody (STJ24340) at a dilution of 1:100 (40x lens). High pressure antigen retrieval was performed with 0.01 M citrate buffer (pH 6.0) prior to immunohistochemistry staining.



Immunohistochemistry analysis of KPNA1 in paraffin-embedded mouse liver tissue using KPNA1 Rabbit polyclonal antibody (STJ24340) at a dilution of 1:100 (40x lens). High pressure antigen retrieval was performed with 0.01 M citrate buffer (pH 6.0) prior to immunohistochemistry staining.



Immunohistochemistry analysis of KPNA1 in paraffin-embedded human kidney tissue using KPNA1 Rabbit polyclonal antibody (STJ24340) at a dilution of 1:100 (40x lens). High pressure antigen retrieval was performed with 0.01 M citrate buffer (pH 6.0) prior to immunohistochemistry staining.



Immunohistochemistry analysis of KPNA1 in paraffin-embedded human brain tissue using KPNA1 Rabbit polyclonal antibody (STJ24340) at a dilution of 1:100 (40x lens). High pressure antigen retrieval was performed with 0.01 M citrate buffer (pH 6.0) prior to immunohistochemistry staining.

This product is suitable for in-vitro studies under the RESEARCH USE ONLY [RUO] licence. This product must not be used as for diagnostic or other medical purposes.
St John's Laboratory Ltd, Knowledge Dock Business Centre, University Way, London, E16 2RD | Tel: 0208 223 3081