

## Anti-KISS1 antibody (124-138) (STJ24318)

STJ24318

### GENERAL INFORMATION

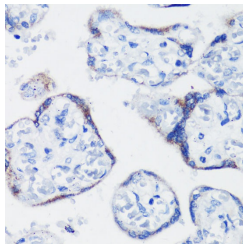
<b>Product Type</b>	Primary antibodies
<b>Short Description</b>	
<b>Applications</b>	WB/IHC-P/ELISA
<b>Host/Source</b>	Rabbit
<b>Reactivity</b>	Human/Mouse

### PRODUCT PROPERTIES

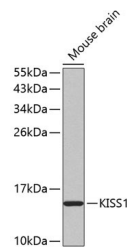
<b>Clonality</b>	Polyclonal
<b>Clone ID</b>	
<b>Concentration</b>	Lot specific
<b>Conjugation</b>	Unconjugated
<b>Purification</b>	Affinity purification
<b>Dilution Range</b>	WB:1:500-1:2000 IHC-P:1:50-1:200 ELISA:Recommended starting concentration is 1 $\mu$ g/mL. Please optimize the concentration based on your specific assay requirements.
<b>Formulation</b>	PBS with 0.05% Proclin300, 50% Glycerol, pH 7.3.
<b>Isotype</b>	IgG
<b>Storage</b>	Store at -20°C for up to 1 year from the date of receipt, and avoid repeat freeze-thaw cycles.
<b>Instruction</b>	

### TARGET INFORMATION

<b>Gene ID</b>	3814
<b>Gene Symbol</b>	KISS1
<b>Uniprot ID</b>	KISS1_HUMAN
<b>Immunogen</b>	
<b>Immunogen Region</b>	124-138
<b>Specificity</b>	A synthetic peptide corresponding to a sequence within amino acids 40-138 of human KISS1 (NP_002247.3). SLGLLAPGEQSLPCTERKPA ATARLSRRGTSLSPPPESSG SPQQPGLSAPHSRQIPAPQG AVLQREKDLPNYNWNSFGL
<b>Immunogen Sequence</b>	RFGKREAPGNHGRSAGRG



Immunohistochemistry analysis of KISS1 in paraffin-embedded human placenta using KISS1 Rabbit polyclonal antibody (STJ24318) at dilution of 1:200 (40x lens). Perform microwave antigen retrieval with 10 mM PBS buffer pH 7.2 before commencing with immunohistochemistry staining protocol.



Western blot analysis of lysates from mouse brain, using KISS1 Rabbit polyclonal antibody (STJ24318). Secondary antibody: HRP Goat Anti-Rabbit IgG (H+L) (STJS000856) at 1:10000 dilution. Lysates/proteins: 25  $\mu$ g per lane. Blocking buffer: 3% nonfat dry milk in TBST.