

Anti-ITGAV antibody (1021-1034) (STJ24252)
STJ24252

GENERAL INFORMATION

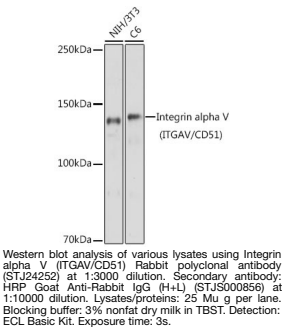
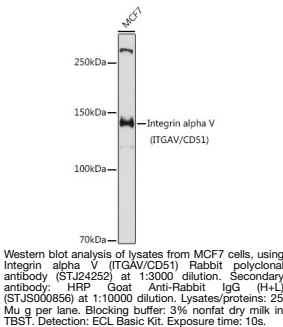
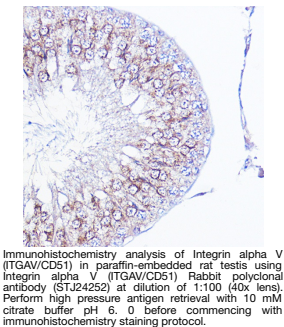
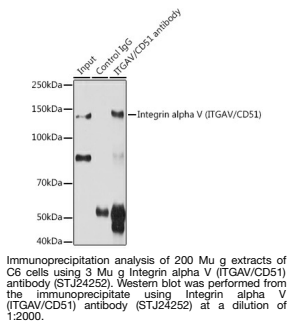
Product Type	Primary antibodies
Short Description	
Applications	WB/IHC-P/IP/ELISA
Host/Source	Rabbit
Reactivity	Human/Mouse/Rat

PRODUCT PROPERTIES

Clonality	Polyclonal
Clone ID	Lot specific
Concentration	Unconjugated
Conjugation	Affinity purification
Purification	WB:1:1000-1:5000
Dilution Range	IHC-P:1:50-1:200 IP:0.5 Mu g-4 Mu g antibody for 200 Mu g-400 Mu g extracts of whole cells ELISA:Recommended starting concentration is 1 Mu g/mL. Please optimize the concentration based on your specific assay requirements
Formulation	PBS with 0.09% Sodium Azide, 50% Glycerol, pH 7.3.
Isotype	IgG
Storage Instruction	Store at -20°C for up to 1 year from the date of receipt, and avoid repeat freeze-thaw cycles.

TARGET INFORMATION

Gene ID	3685
Gene Symbol	ITGAV
Uniprot ID	ITAV_HUMAN
Immunogen	
Immunogen Region	1021-1034
Specificity	A synthetic peptide corresponding to a sequence within amino acids 950-1048 of human Integrin alpha V (ITGAV/CD51) (NP_002201.1).
Immunogen Sequence	LKSSASFNVEFPYKNLPIDITNSTLVTNTVWGIQAPMPVPVWVILAVLAGLLLLLVLFVVMYRMGFFKRVPPQE EQEREQLQPHENGEGNSE



This product is suitable for in-vitro studies under the RESEARCH USE ONLY [RUO] licence. This product must not be used as for diagnostic or other medical purposes.
St John's Laboratory Ltd, Knowledge Dock Business Centre, University Way, London, E16 2RD | Tel: 0208 223 3081