

## Anti-ISG15 antibody (1-165) (STJ24238)

STJ24238

### GENERAL INFORMATION

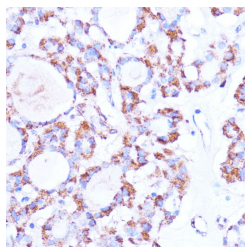
<b>Product Type</b>	Primary antibodies
<b>Short Description</b>	
<b>Applications</b>	WB/IHC-P/ELISA
<b>Host/Source</b>	Rabbit
<b>Reactivity</b>	Human/Rat

### PRODUCT PROPERTIES

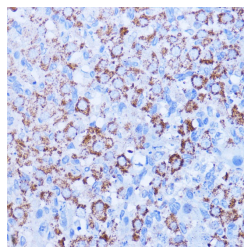
<b>Clonality</b>	Polyclonal
<b>Clone ID</b>	
<b>Concentration</b>	Lot specific
<b>Conjugation</b>	Unconjugated
<b>Purification</b>	Affinity purification
<b>Dilution</b>	WB:1:500-1:1000
<b>Range</b>	IHC-P:1:50-1:200
	ELISA:Recommended starting concentration is 1 $\mu$ g/mL. Please optimize the concentration based on your specific assay requirements.
<b>Formulation</b>	PBS with 0.02% Sodium Azide, 50% Glycerol, pH 7.3.
<b>Isotype</b>	IgG
<b>Storage Instruction</b>	Store at -20°C for up to 1 year from the date of receipt, and avoid repeat freeze-thaw cycles.

### TARGET INFORMATION

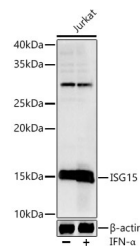
<b>Gene ID</b>	9636
<b>Gene Symbol</b>	ISG15
<b>Uniprot ID</b>	ISG15_HUMAN
<b>Immunogen</b>	
<b>Immunogen Region</b>	1-165
<b>Specificity</b>	Recombinant fusion protein containing a sequence corresponding to amino acids 1-165 of human ISG15 (NP_005092.1).
<b>Immunogen Sequence</b>	MGWDLTVKMLAGNEFQVSLSSMSVSELKAQITQKIGVHA FQQLAVHPSGVALQDRVPL ASQGLGPGSTVLLVVDKCDE PLSILVRNNKGRSSTYEVRLL TQTVAHLKQQVSGLEGVQDD LFWLTFEGKPLEDQLPLGEY GLKPLSTVFMNLRRLRGGGTE PGGRS



Immunohistochemistry analysis of paraffin-embedded human thyroid cancer using ISG15 antibody (STJ24238) at dilution of 1:100 (40x lens). Perform microwave antigen retrieval with 10 mM PBS buffer pH 7.2 before commencing with immunohistochemistry staining protocol.



Immunohistochemistry analysis of paraffin-embedded rat ovary using ISG15 antibody (STJ24238) at dilution of 1:100 (40x lens). Perform microwave antigen retrieval with 10 mM PBS buffer pH 7.2 before commencing with immunohistochemistry staining protocol.



Western blot analysis of Jurkat, using ISG15 Rabbit polyclonal antibody (STJ24238) at 1:1000 dilution. Jurkat cells were treated by IFN-Alpha (100 ng/ml) at 37 °C for 30 minutes after serum-starvation overnight. Secondary antibody: HRP Goat Anti-Rabbit IgG (H+L) (STJ5000856) at 1:10000 dilution. Lysates/proteins: 25ug per lane. Blocking buffer: 3% nonfat dry milk in TBST. Detection: ECL Basic Kit. Exposure time: 5s.

This product is suitable for in-vitro studies under the RESEARCH USE ONLY [RUO] licence. This product must not be used as for diagnostic or other medical purposes.

St John's Laboratory Ltd, Knowledge Dock Business Centre, University Way, London, E16 2RD | Tel: 0208 223 3081