

Anti-IRF5 antibody (1-200) (STJ24230)

STJ24230

GENERAL INFORMATION

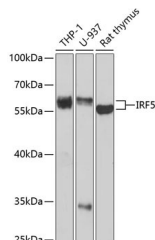
Product Type	Primary antibodies
Short Description	
Applications	WB/IHC-P/ELISA
Host/Source	Rabbit
Reactivity	Human/Rat

PRODUCT PROPERTIES

Clonality	Polyclonal
Clone ID	
Concentration	Lot specific
Conjugation	Unconjugated
Purification	Affinity purification
Dilution	WB:1:500-1:2000
Range	IHC-P:1:50-1:100 ELISA:Recommended starting concentration is 1 μ g/mL. Please optimize the concentration based on your specific assay requirements.
Formulation	PBS with 0.02% Sodium Azide, 50% Glycerol, pH 7.3.
Isotype	IgG
Storage Instruction	Store at -20°C for up to 1 year from the date of receipt, and avoid repeat freeze-thaw cycles.

TARGET INFORMATION

Gene ID	3663
Gene Symbol	IRF5
Uniprot ID	IRF5_HUMAN
Immunogen	
Immunogen Region	1-200
Specificity	Recombinant fusion protein containing a sequence corresponding to amino acids 1-200 of human IRF5 (NP_001092097.2).
Immunogen Sequence	MNQSIPTVPTPPRRVRLKPW LVAQVNSQYPGLQWVNGEK KLFICIPWRHATRHGPSQDGD NTIFKAWAKETGKYTEGVDE ADPAKWKANLRCALNKSRDF RLIYDGPDMPPQPYKIYEV CSNGPAPTDSQPPEYDFGA GEEEEEEELQRMPLSLSLT EDVKWPPTLQPPPTLRPTLQ PPTLQPPVVLGPPAPDPSPL



Western blot analysis of extracts of various cell lines, using IRF5 antibody (STJ24230) at 1:1000 dilution. Secondary antibody: HRP Goat Anti-Rabbit IgG (H+L) (STJ5000856) at 1:10000 dilution. Lysates/proteins: 25 μ g per lane. Blocking buffer: 3% nonfat dry milk in TBST. Detection: ECL Enhanced Kit. Exposure time: 90s.

This product is suitable for in-vitro studies under the RESEARCH USE ONLY [RUO] licence. This product must not be used as for diagnostic or other medical purposes.

St John's Laboratory Ltd, Knowledge Dock Business Centre, University Way, London, E16 2RD | Tel: 0208 223 3081