

Anti-ILK antibody (1-260) (STJ24198)
STJ24198

GENERAL INFORMATION

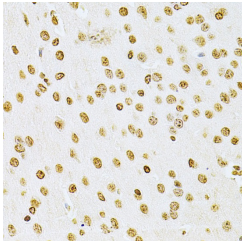
Product Type	Primary antibodies
Short Description	
Applications	WB/IHC-P/ELISA
Host/Source	Rabbit
Reactivity	Human/Mouse/Rat

PRODUCT PROPERTIES

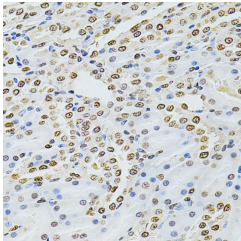
Clonality	Polyclonal
Clone ID	
Concentration	Lot specific
Conjugation	Unconjugated
Purification	Affinity purification
Dilution	WB:1:500-1:1000
Range	IHC-P:1:50-1:100 ELISA:Recommended starting concentration is 1 μ g/mL. Please optimize the concentration based on your specific assay requirements.
Formulation	PBS with 0.02% Sodium Azide, 50% Glycerol, pH 7.3.
Isotype	IgG
Storage Instruction	Store at -20°C for up to 1 year from the date of receipt, and avoid repeat freeze-thaw cycles.

TARGET INFORMATION

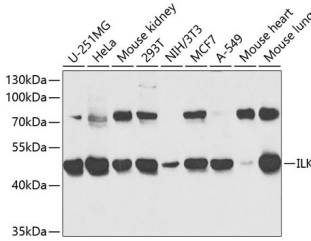
Gene ID	3611
Gene Symbol	ILK
Uniprot ID	ILK_HUMAN
Immunogen	
Immunogen Region	1-260
Specificity	Recombinant fusion protein containing a sequence corresponding to amino acids 1-260 of human ILK (NP_001014795.1).
Immunogen Sequence	MDDIFTQCREGNAVAVRLWL DNTENDLNQGDDHGFSLHW ACREGRSAVVEMLIMRGARI NVMNRGDDTPLHLAASHGHR DIVQKLLQYKADINAVNEHG NVPLHYACFWGQDQVAEDLV ANGALVSICNKYGEMPVDKA KAPLRELLRERAEKMGQNLN RIPYKDTFWKGTTTRTPRNG TLNKHSGIDFKQLNFLTCLN ENHSGELWKGWRWQGNDIVVK VLKVRDWSTRKSRDFNEEC



Immunohistochemistry analysis of paraffin-embedded mouse brain using ILK Antibody (STJ24198) at dilution of 1:200 (40x lens). Perform microwave antigen retrieval with 10 mM PBS buffer pH 7.2 before commencing with immunohistochemistry staining protocol.



Immunohistochemistry analysis of paraffin-embedded rat kidney using ILK Antibody (STJ24198) at dilution of 1:200 (40x lens). Perform microwave antigen retrieval with 10 mM PBS buffer pH 7.2 before commencing with immunohistochemistry staining protocol.



Western blot analysis of extracts of various cell lines, using ILK antibody (STJ24198) at 1:1000 dilution. Secondary antibody: HRP Goat Anti-Rabbit IgG (H+L) (STJ5000856) at 1:10000 dilution. Lysates/proteins: 25 μ g per lane. Blocking buffer: 3% nonfat dry milk in TBST.

This product is suitable for in-vitro studies under the RESEARCH USE ONLY [RUO] licence. This product must not be used as for diagnostic or other medical purposes.
St John's Laboratory Ltd, Knowledge Dock Business Centre, University Way, London, E16 2RD | Tel: 0208 223 3081