

Anti-IL18 antibody (37-193) (STJ24170)

STJ24170

GENERAL INFORMATION

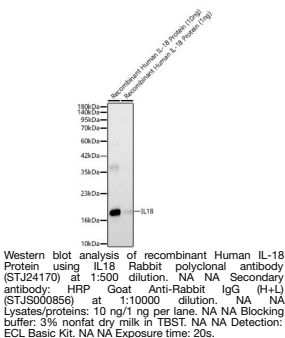
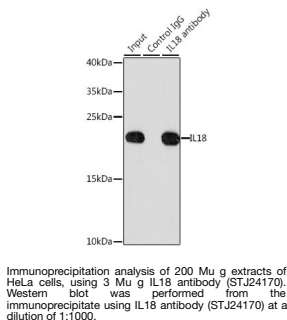
Product Type	Primary antibodies
Short Description	
Applications	WB/IP/ELISA
Host/Source	Rabbit
Reactivity	Human

PRODUCT PROPERTIES

Clonality	Polyclonal
Clone ID	
Concentration	Lot specific
Conjugation	Unconjugated
Purification	Affinity purification
Dilution	WB: 1:500-1:1000
Range	IP: 0.5 Mu g-4 Mu g antibody for 200 Mu g extracts of whole cells ELISA: Recommended starting concentration is 1 Mu g/mL. Please optimize the concentration based on your specific assay requirements.
Formulation	PBS with 0.02% Sodium Azide, 50% Glycerol, pH 7.3.
Isotype	IgG
Storage Instruction	Store at -20°C for up to 1 year from the date of receipt, and avoid repeat freeze-thaw cycles.

TARGET INFORMATION

Gene ID	3606
Gene Symbol	IL18
Uniprot ID	IL18_HUMAN
Immunogen	
Immunogen Region	37-193
Specificity	A synthetic peptide corresponding to a sequence within amino acids 37-193 of human IL18 (NP_001553.1).
Immunogen Sequence	YFGKLESKLSVIRNLNDQVL FIDQGNRPLFEDMTDSDCRD NAPRTIFIISMYKDSQPRGM AVTISVKCEKISTLSCENKI ISFKEMNPPDNIKDTKSDII FFQRSVPGHDNKMQFESSY EGYFLACEKERDLFKLILKK EDELGDRSIMFTVQNE



This product is suitable for in-vitro studies under the RESEARCH USE ONLY [RUO] licence. This product must not be used as for diagnostic or other medical purposes.
St John's Laboratory Ltd, Knowledge Dock Business Centre, University Way, London, E16 2RD | Tel: 0208 223 3081