

**Anti-IKBKG antibody (250-390) (STJ24154)**  
STJ24154

**GENERAL INFORMATION**

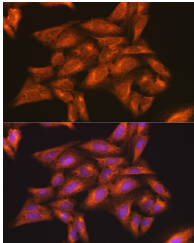
|                          |                       |
|--------------------------|-----------------------|
| <b>Product Type</b>      | Primary antibodies    |
| <b>Short Description</b> |                       |
| <b>Applications</b>      | WB/IHC-P/IF/ICC/ELISA |
| <b>Host/Source</b>       | Rabbit                |
| <b>Reactivity</b>        | Human/Mouse/Rat       |

**PRODUCT PROPERTIES**

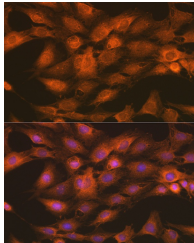
|                      |   |
|----------------------|---|
| <b>Clonality</b>     | Polyclonal  |
| <b>Clone ID</b>      |   |
| <b>Concentration</b> | Lot specific  |
| <b>Conjugation</b>   | Unconjugated  |
| <b>Purification</b>  | Affinity purification   |
| <b>Dilution</b>      | WB:1:1000-1:5000  |
| <b>Range</b>         | IHC-P:1:50-1:100<br>IF/ICC:1:50-1:200<br>ELISA:Recommended starting concentration is 1 $\mu$ g/mL. Please optimize the concentration based on your specific assay requirements. |
| <b>Formulation</b>   | PBS with 0.01% Thimerosal, 50% Glycerol, pH 7.3.  |
| <b>Isotype</b>       | IgG   |
| <b>Storage</b>       | Store at -20°C for up to 1 year from the date of receipt, and avoid repeat freeze-thaw cycles.  |
| <b>Instruction</b>   |   |

**TARGET INFORMATION**

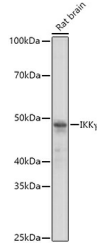
|                           |  |
|---------------------------|--|
| <b>Gene ID</b>            | 8517   |
| <b>Gene Symbol</b>        | IKBK $\gamma$  |
| <b>Uniprot ID</b>         | NEMO_HUMAN   |
| <b>Immunogen</b>          |  |
| <b>Region</b>             | 250-390  |
| <b>Specificity</b>        | Recombinant fusion protein containing a sequence corresponding to amino acids 250-390 of human IKK Gamma (NP_003630.1).                                |
| <b>Immunogen Sequence</b> | VGSEKRGMQLEDLKQQLQQ AEEALVAKQEVIDKLKEEAE QHKIVMETVPVLKAQADIYK ADFQAERQAREKLAEEKKELL<br>QEQLQLQREYSKLGKASCQE SARIEDMRKRHVEVSQAPLP PAPAYLSSPLALPSQRRSP E |



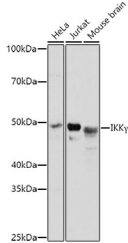
Immunofluorescence analysis of U-2 OS cells using IKK Gamma Rabbit polyclonal antibody (STJ24154) at dilution of 1:100 (40x lens). Secondary antibody: Cy3 Goat Anti-Rabbit IgG (H+L) at 1:500 dilution. Blue: DAPI for nuclear staining.



Immunofluorescence analysis of C6 cells using IKK Gamma Rabbit polyclonal antibody (STJ24154) at dilution of 1:100 (40x lens). Secondary antibody: Cy3 Goat Anti-Rabbit IgG (H+L) at 1:500 dilution. Blue: DAPI for nuclear staining.



Western blot analysis of lysates from Rat brain, using IKK Gamma Rabbit polyclonal antibody (STJ24154) at 1:3000 dilution. Secondary antibody: HRP Goat Anti-Rabbit IgG (H+L) (STJ500856) at 1:10000 dilution. Lysates/proteins: 25  $\mu$ g per lane. Blocking buffer: 3% nonfat dry milk in TBST. Detection: ECL Basic Kit. Exposure time: 30s.



Western blot analysis of various lysates using IKK Gamma Rabbit polyclonal antibody (STJ24154) at 1:3000 dilution. Secondary antibody: HRP Goat Anti-Rabbit IgG (H+L) (STJ500856) at 1:10000 dilution. Lysates/proteins: 25  $\mu$ g per lane. Blocking buffer: 3% nonfat dry milk in TBST. Detection: ECL Basic Kit. Exposure time: 3s.

This product is suitable for in-vitro studies under the RESEARCH USE ONLY [RUO] licence. This product must not be used as for diagnostic or other medical purposes.  
St John's Laboratory Ltd, Knowledge Dock Business Centre, University Way, London, E16 2RD | Tel: 0208 223 3081