

Anti-HSPD1 antibody (27-240) (STJ24105)

STJ24105

GENERAL INFORMATION

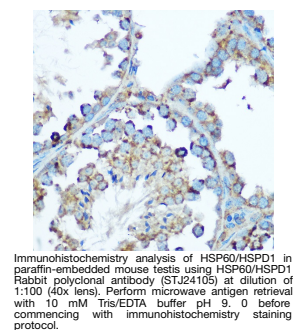
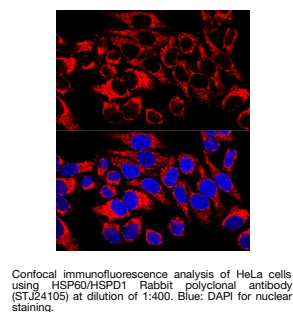
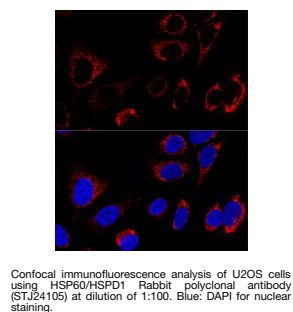
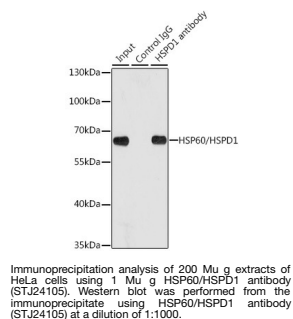
| | |
|--------------------------|--------------------------|
| Product Type | Primary antibodies |
| Short Description | |
| Applications | WB/IHC-P/IF/ICC/IP/ELISA |
| Host/Source | Rabbit |
| Reactivity | Human/Mouse/Rat |

PRODUCT PROPERTIES

| | |
|----------------------|---|
| Clonality | Polyclonal |
| Clone ID | |
| Concentration | Lot specific |
| Conjugation | Unconjugated |
| Purification | Affinity purification |
| Dilution | WB:1:500-1:2000 |
| Range | IHC-P:1:50-1:200 IF/ICC:1:50-1:100 IP:0.5 Mu g-4 Mu g antibody for 200 Mu g-400 Mu g extracts of whole cells ELISA:Recommended starting concentration is 1 Mu g/mL. Please optimize the concentration based on your specif |
| Formulation | PBS with 0.09% Sodium Azide, 50% Glycerol, pH 7.3. |
| Isotype | IgG |
| Storage | Store at-20°C for up to 1 year from the date of receipt, and avoid repeat freeze-thaw cycles. |
| Instruction | |

TARGET INFORMATION

| | |
|---------------------------|--|
| Gene ID | 3329 |
| Gene Symbol | HSPD1 |
| Uniprot ID | CH60_HUMAN |
| Immunogen | |
| Region | 27-240 |
| Specificity | Recombinant fusion protein containing a sequence corresponding to amino acids 27-240 of human HSP60/HSPD1 (NP_002147.2). |
| Immunogen Sequence | AKDVKFGADARALMLQGVDL LADAVAVTMGPKGRTVII EQ SWGSPKVTGDGVTAKSIDL KDKYKNIGAKLVQDVANNTN EEAGDGTTTATVLARSIAKE GFEEKSGANPVEIRRGV ML AVDAVIAELKKQSKPVTTP E EIAQVATISANGDKEIGNII SDAMKKVGRKGVITVKDGKT LNDELEIEGMKFDRGYISP YFINTSKGQKCEFG |



This product is suitable for in-vitro studies under the RESEARCH USE ONLY [RUO] licence. This product must not be used as for diagnostic or other medical purposes.
St John's Laboratory Ltd, Knowledge Dock Business Centre, University Way, London, E16 2RD | Tel: 0208 223 3081