

Anti-HSPA8 antibody (510-615) (STJ24099)
STJ24099

GENERAL INFORMATION

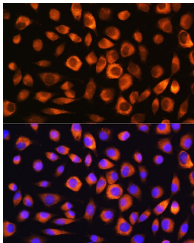
Product Type	Primary antibodies
Short Description	
Applications	WB/IHC-P/IF/ICC/ELISA
Host/Source	Rabbit
Reactivity	Human/Mouse/Rat/Monkey

PRODUCT PROPERTIES

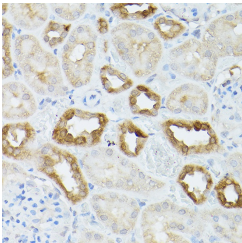
Clonality	Polyclonal
Clone ID	
Concentration	Lot specific
Conjugation	Unconjugated
Purification	Affinity purification
Dilution Range	WB:1:500-1:1000 IHC-P:1:50-1:200 IF/ICC:1:50-1:200 ELISA:Recommended starting concentration is 1 µg/mL. Please optimize the concentration based on your specific assay requirements.
Formulation	PBS with 0.09% Sodium Azide, 50% Glycerol, pH 7.3.
Isotype	IgG
Storage	Store at -20°C up to 1 year from the date of receipt, and avoid repeat freeze-thaw cycles.
Instruction	

TARGET INFORMATION

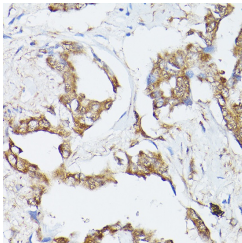
Gene ID	3312
Gene Symbol	HSPA8
Uniprot ID	HSP7C_HUMAN
Immunogen	
Immunogen Region	510-615
Specificity	Recombinant fusion protein containing a sequence corresponding to amino acids 510-615 of human Hsc70/HSPA8 (NP_006588.1).
Immunogen Sequence	LSKEDIERMVQEAKEYKAED EKQRDKVSSKNSLESYAFNM KATVEDEKLQGGKINDEDKQK ILDKCNEIINWLDKNQTAEK EEFHQQKELEKVCNPIITK LYQSAG



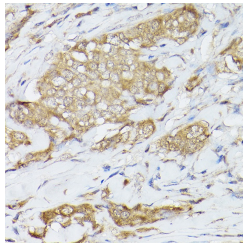
Immunofluorescence analysis of L929 cells using Hsc70/HSPA8 Rabbit polyclonal antibody (STJ24099) at dilution of 1:100. Blue: DAPI for nuclear staining.



Immunohistochemistry analysis of paraffin-embedded mouse kidney using Hsc70/HSPA8 Rabbit polyclonal antibody (STJ24099) at dilution of 1:200 (40x lens). Perform high pressure antigen retrieval with 10 mM citrate buffer pH 6.0 before commencing with immunohistochemistry staining protocol.



Immunohistochemistry analysis of paraffin-embedded human lung cancer using Hsc70/HSPA8 Rabbit polyclonal antibody (STJ24099) at dilution of 1:200 (40x lens). Perform high pressure antigen retrieval with 10 mM citrate buffer pH 6.0 before commencing with immunohistochemistry staining protocol.



Immunohistochemistry analysis of paraffin-embedded human breast cancer using Hsc70/HSPA8 Rabbit polyclonal antibody (STJ24099) at dilution of 1:200 (40x lens). Perform high pressure antigen retrieval with 10 mM citrate buffer pH 6.0 before commencing with immunohistochemistry staining protocol.

This product is suitable for in-vitro studies under the RESEARCH USE ONLY [RUO] licence. This product must not be used as for diagnostic or other medical purposes.
St John's Laboratory Ltd, Knowledge Dock Business Centre, University Way, London, E16 2RD | Tel: 0208 223 3081