

**Anti-HSPA5 antibody (550-650) (STJ24096)**  
STJ24096

**GENERAL INFORMATION**

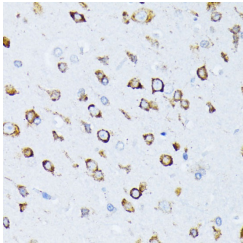
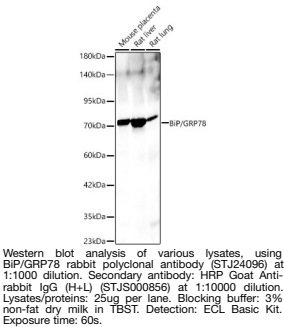
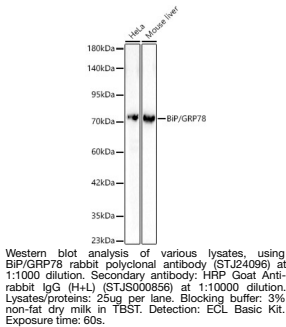
<b>Product Type</b>	Primary antibodies
<b>Short Description</b>	
<b>Applications</b>	WB/IHC-P/ELISA
<b>Host/Source</b>	Rabbit
<b>Reactivity</b>	Human/Mouse/Rat

**PRODUCT PROPERTIES**

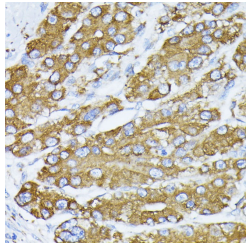
<b>Clonality</b>	Polyclonal
<b>Clone ID</b>	
<b>Concentration</b>	Lot specific
<b>Conjugation</b>	Unconjugated
<b>Purification</b>	Affinity purification
<b>Dilution Range</b>	WB:1:500-1:1000 IHC-P:1:50-1:200 ELISA:Recommended starting concentration is 1 Mu g/mL. Please optimize the concentration based on your specific assay requirements.
<b>Formulation</b>	PBS with 0.09% Sodium Azide, 50% Glycerol, pH 7.3.
<b>Isotype</b>	IgG
<b>Storage Instruction</b>	Store at -20°C for up to 1 year from the date of receipt, and avoid repeat freeze-thaw cycles.

**TARGET INFORMATION**

<b>Gene ID</b>	3309
<b>Gene Symbol</b>	HSPA5
<b>Uniprot ID</b>	BIP_HUMAN
<b>Immunogen</b>	
<b>Immunogen Region</b>	550-650
<b>Specificity</b>	A synthetic peptide corresponding to a sequence within amino acids 550-650 of human BiP/GRP78 (NP_005338.1).
<b>Immunogen Sequence</b>	EEDKKLKERIDTRNELESYA YSLKNQIGDKELGGKLSSE DKETMEKAVEEKIEWLESHQ DADIEDFKAKKKELEEIVQP IISKLYGSAGPPPTGEEDTA E



Immunohistochemistry analysis of paraffin-embedded rat brain using BiP/GRP78 antibody (STJ24096) at dilution of 1:100 (40x lens). Perform microwave antigen retrieval with 10 mM PBS buffer pH 7. 2 before commencing with immunohistochemistry staining protocol.



Immunohistochemistry analysis of paraffin-embedded human liver cancer using BiP/GRP78 antibody (STJ24096) at dilution of 1:100 (40x lens). Perform microwave antigen retrieval with 10 mM PBS buffer pH 7. 2 before commencing with immunohistochemistry staining protocol.