

Anti-HSPA1A antibody [S2MM] (STJ24092)

STJ24092

GENERAL INFORMATION

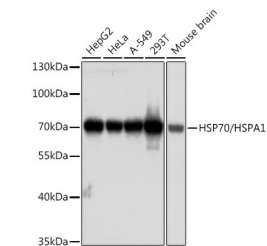
Product Type	Primary antibodies
Short Description	
Applications	WB/ELISA
Host/Source	Mouse
Reactivity	Human/Mouse

PRODUCT PROPERTIES

Clonality	Monoclonal
Clone ID	S2MM
Concentration	Lot specific
Conjugation	Unconjugated
Purification	Affinity purification
Dilution Range	WB:1:2000-1:5000 ELISA:Recommended starting concentration is 1 µg/mL. Please optimize the concentration based on your specific assay requirements.
Formulation	PBS with 0.02% Sodium Azide, 50% Glycerol, pH 7.3.
Isotype	IgMκ
Storage Instruction	Store at -20°C for up to 1 year from the date of receipt, and avoid repeat freeze-thaw cycles.

TARGET INFORMATION

Gene ID	3303/3304
Gene Symbol	HSPA1A
Uniprot ID	HS71A_HUMAN
Immunogen	
Immunogen Region	
Specificity	A synthetic peptide of human HSP70/HSPA1
Immunogen Sequence	



Western blot analysis of extracts of various cell lines, using HSP70/HSPA1 antibody (STJ24092) at 1:1000 dilution. Secondary antibody: HRP Goat Anti-Mouse IgG (H+L) at 1:10000 dilution. Lysates/proteins: 25 µg per lane. Blocking buffer: 3% nonfat dry milk in TBST. Detection: ECL Basic Kit. Exposure time: 60s.

This product is suitable for in-vitro studies under the RESEARCH USE ONLY [RUO] licence. This product must not be used as for diagnostic or other medical purposes.
St John's Laboratory Ltd, Knowledge Dock Business Centre, University Way, London, E16 2RD | Tel: 0208 223 3081