

## Anti-HMGB1 antibody (69-215) (STJ24039)

STJ24039

### GENERAL INFORMATION

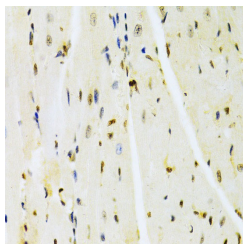
<b>Product Type</b>	Primary antibodies
<b>Short Description</b>	
<b>Applications</b>	WB/IHC-P/ELISA
<b>Host/Source</b>	Rabbit
<b>Reactivity</b>	Human/Mouse/Rat

### PRODUCT PROPERTIES

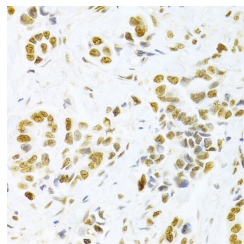
<b>Clonality</b>	Polyclonal
<b>Clone ID</b>	
<b>Concentration</b>	Lot specific
<b>Conjugation</b>	Unconjugated
<b>Purification</b>	Affinity purification
<b>Dilution Range</b>	WB:1:500-1:1000 IHC-P:1:50-1:200 ELISA:Recommended starting concentration is 1 µg/mL. Please optimize the concentration based on your specific assay requirements.
<b>Formulation</b>	PBS with 0.02% Sodium Azide, 50% Glycerol, pH 7.3.
<b>Isotype</b>	IgG
<b>Storage</b>	Store at -20°C for up to 1 year from the date of receipt, and avoid repeat freeze-thaw cycles.
<b>Instruction</b>	

### TARGET INFORMATION

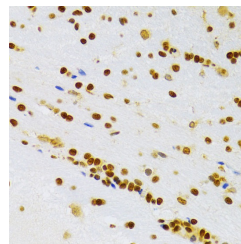
<b>Gene ID</b>	3146
<b>Gene Symbol</b>	HMGB1
<b>Uniprot ID</b>	HMGB1_HUMAN
<b>Immunogen</b>	
<b>Immunogen Region</b>	69-215
<b>Specificity</b>	Recombinant fusion protein containing a sequence corresponding to amino acids 69-168 of human HMGB1 (NP_002119.1).
<b>Immunogen Sequence</b>	ARYEREMKTYIPPKGETKKK FKDPNAPKRPPSAFFLCSE YRPKIKGEHPGLSIGDVAKK LGEMWNNTAADDKQPYEKKA AKLKEKYEKDIAAYRAKGKP



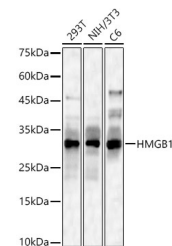
Immunohistochemistry analysis of HMGB1 in paraffin-embedded mouse heart using HMGB1 Rabbit polyclonal antibody (STJ24039) at dilution of 1:100 (40x lens). Perform microwave antigen retrieval with 10 mM PBS buffer pH 7.2 before commencing with immunohistochemistry staining protocol.



Immunohistochemistry analysis of HMGB1 in paraffin-embedded human breast cancer using HMGB1 Rabbit polyclonal antibody (STJ24039) at dilution of 1:100 (40x lens). Perform microwave antigen retrieval with 10 mM PBS buffer pH 7.2 before commencing with immunohistochemistry staining protocol.



Immunohistochemistry analysis of HMGB1 in paraffin-embedded rat brain using HMGB1 Rabbit polyclonal antibody (STJ24039) at dilution of 1:100 (40x lens). Perform microwave antigen retrieval with 10 mM PBS buffer pH 7.2 before commencing with immunohistochemistry staining protocol.



Western blot analysis of various lysates, using HMGB1 Rabbit polyclonal antibody (STJ24039) at 1:1000 dilution. Secondary antibody: HRP Goat Anti-Rabbit IgG (H+L) (STJS000856) at 1:10000 dilution. Lysates/proteins: 25 µg per lane. Blocking buffer: 3% nonfat dry milk in TBS. Detection: ECL Basic Kit. Exposure time: 60s.

This product is suitable for in-vitro studies under the RESEARCH USE ONLY [RUO] licence. This product must not be used as for diagnostic or other medical purposes.  
St John's Laboratory Ltd, Knowledge Dock Business Centre, University Way, London, E16 2RD | Tel: 0208 223 3081