

## Anti-Di-Methyl-Histone H3-R8 antibody (Around R8) (STJ23997)

STJ23997

### GENERAL INFORMATION

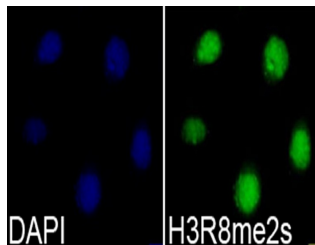
<b>Product Type</b>	Primary antibodies
<b>Short Description</b>	
<b>Applications</b>	WB/IHC-P/IF/ICC/ELISA/ChIP-seq
<b>Host/Source</b>	Rabbit
<b>Reactivity</b>	Human/Mouse/Rat/Other

### PRODUCT PROPERTIES

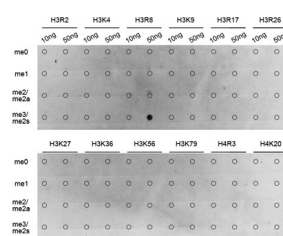
<b>Clonality</b>	Polyclonal
<b>Clone ID</b>	
<b>Concentration</b>	Lot specific
<b>Conjugation</b>	Unconjugated
<b>Purification</b>	Affinity purification
<b>Dilution Range</b>	WB:1:100-1:500 IHC-P:1:50-1:200 IF/ICC:1:50-1:200 ELISA:Recommended starting concentration is 1 Mu g/mL. Please optimize the concentration based on your specific assay requirements. ChIP-seq:1:20-1:50
<b>Formulation</b>	PBS with 0.02% Sodium Azide, 50% Glycerol, pH 7.3.
<b>Isotype</b>	IgG
<b>Storage Instruction</b>	Store at -20°C for up to 1 year from the date of receipt, and avoid repeat freeze-thaw cycles.

### TARGET INFORMATION

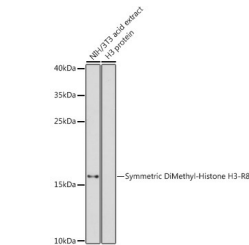
<b>Gene ID</b>	8290 8350/8351/8352/8353/8354/8355/8356/8357/8358/8968
<b>Gene Symbol</b>	H3-4 H3C1.H3C2.H3C3.H3C4.H3C6. H31T_HUMAN H31_HUMAN
<b>Uniprot ID</b>	
<b>Immunogen</b>	
<b>Immunogen Region</b>	Around R8
<b>Specificity</b>	A synthetic symmetric dimethylated peptide around R8 of human histone H3 (NP_003520.1).
<b>Immunogen Sequence</b>	TARKS



Immunofluorescence analysis of 293T cells using Symmetric DiMethyl-Histone H3-R8 Rabbit polyclonal antibody (STJ23997). Blue: DAPI for nuclear staining.



Dot-blot analysis of all sorts of methylation peptides using Symmetric DiMethyl-Histone H3-R8 antibody (STJ23997).



Western blot analysis of lysates from NIH/3T3 cells, using Symmetric DiMethyl-Histone H3-R8 Rabbit polyclonal antibody (STJ23997) at 1:500 dilution. Secondary antibody: HRP Goat Anti-Rabbit IgG (H+L) (STJS000856) at 1:10000 dilution. Lysates/proteins: 25 Mu.g per lane. Blocking buffer: 3% nonfat dry milk in TBST. Detection: ECL Enhanced Kit. Exposure time: 180s.