

## Anti-Di-Methyl-Histone H3-K79 antibody (STJ23994)

STJ23994

### GENERAL INFORMATION

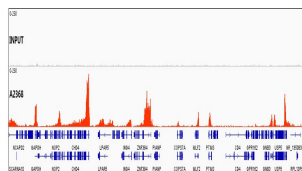
<b>Product Type</b>	Primary antibodies
<b>Short Description</b>	
<b>Applications</b>	WB/IHC-P/IF/ICC/IP/ELISA/ChIP/ChIP-seq
<b>Host/Source</b>	Rabbit
<b>Reactivity</b>	Human/Mouse/Rat/Other

### PRODUCT PROPERTIES

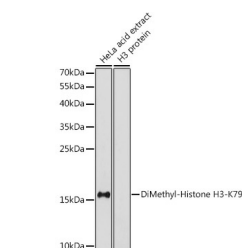
<b>Clonality</b>	Polyclonal
<b>Clone ID</b>	
<b>Concentration</b>	Lot specific
<b>Conjugation</b>	Unconjugated
<b>Purification</b>	Affinity purification
<b>Dilution Range</b>	WB:1:500-1:1000 IHC-P:1:50-1:100 IF/ICC:1:50-1:200 IP:0.5 Mu g-4 Mu g antibody for 200 Mu g-400 Mu g extracts of whole cells ELISA:Recommended starting concentration is 1 Mu g/mL. Please optimize the concentration based on your specif
<b>Formulation</b>	PBS with 0.09% Sodium Azide, 50% Glycerol, pH 7.3.
<b>Isotype</b>	IgG
<b>Storage Instruction</b>	Store at -20°C for up to 1 year from the date of receipt, and avoid repeat freeze-thaw cycles.

### TARGET INFORMATION

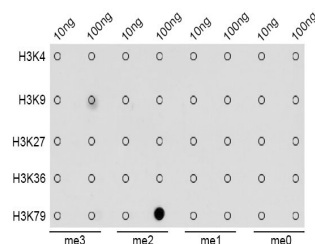
<b>Gene ID</b>	8290 <a href="#">8350/8351/8352/8353/8354/8355/8356/8357/8358/8968</a>
<b>Gene Symbol</b>	H3-4 <a href="#">H3C1.H3C2.H3C3.H3C4.H3C6.</a>
<b>Uniprot ID</b>	<a href="#">H31T_HUMAN</a> <a href="#">H31_HUMAN</a>
<b>Immunogen</b>	DFKTD
<b>Immunogen Region</b>	
<b>Specificity</b>	A synthetic dimethylated peptide around K79 of human Histone H3 (NP_003520.1).
<b>Immunogen Sequence</b>	DFKTD



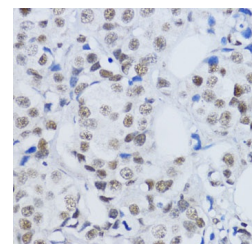
Chromatin immunoprecipitations were performed with cross-linked chromatin from K-562 cells and DiMethyl-Histone H3-K79 rabbit polyclonal antibody (STJ23994). The ChIP sequencing results indicate the enrichment pattern of DiMethyl-Histone H3-K79 in selected genomic region and representative gene loci (GAPDH), as shown in figure.



Western blot analysis of extracts of HeLa cells, using DiMethyl-Histone H3-K79 antibody (STJ23994) at 1:1000 dilution. Secondary antibody: HRP Goat Anti-rabbit IgG (H+L) (STJS000856) at 1:10000 dilution. Lysates/proteins: 25 Mu g per lane. Blocking buffer: 3% non-fat dry milk in TBST. Detection: ECL Basic Kit. Exposure time: 90s.



Dot-blot analysis of all sorts of methylation peptides using DiMethyl-Histone H3-K79 antibody (STJ23994).



Immunohistochemistry analysis of paraffin-embedded human mammary cancer using DiMethyl-Histone H3-K79 antibody (STJ23994) at dilution of 1:200 (40x lens). Perform microwave antigen retrieval with 10 mM PBS buffer pH 7.2 before commencing with immunohistochemistry staining protocol.

This product is suitable for in-vitro studies under the RESEARCH USE ONLY [RUO] licence. This product must not be used as for diagnostic or other medical purposes.  
St John's Laboratory Ltd, Knowledge Dock Business Centre, University Way, London, E16 2RD | Tel: 0208 223 3081