

**Anti-Mono-Methyl-Histone H3-K9 antibody (STJ23984)**  
STJ23984

**GENERAL INFORMATION**

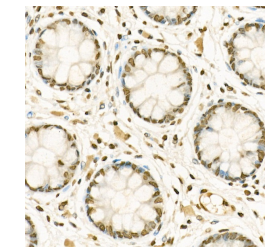
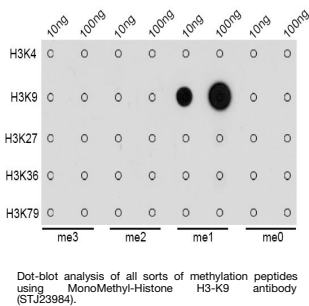
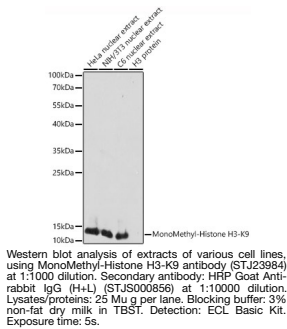
<b>Product Type</b>	Primary antibodies
<b>Short Description</b>	
<b>Applications</b>	WB/DB/IHC-P/IF/ICC/ELISA/ChIP/ChIP-seq
<b>Host/Source</b>	Rabbit
<b>Reactivity</b>	Human/Mouse/Rat/Other

**PRODUCT PROPERTIES**

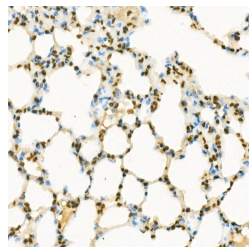
<b>Clonality</b>	Polyclonal
<b>Clone ID</b>	
<b>Concentration</b>	Lot specific
<b>Conjugation</b>	Unconjugated
<b>Purification</b>	Affinity purification
<b>Dilution Range</b>	WB:1:500-1:1000 DB:1:500-1:2000 IHC-P:1:50-1:200 IF/ICC:1:50-1:200 ELISA:Recommended starting concentration is 1 $\mu$ g/mL. Please optimize the concentration based on your specific assay requirements. ChIP:5 $\mu$ g antibody for 5 $\mu$ g
<b>Formulation</b>	PBS with 0.02% Sodium Azide, 50% Glycerol, pH 7.3.
<b>Isotype</b>	IgG
<b>Storage Instruction</b>	Store at -20°C for up to 1 year from the date of receipt, and avoid repeat freeze-thaw cycles.

**TARGET INFORMATION**

<b>Gene ID</b>	8290 <a href="#">8350/8351/8352/8353/8354/8355/8356/8357/8358/8968</a>
<b>Gene Symbol</b>	H3-4 <a href="#">H3C1.H3C2.H3C3.H3C4.H3C6.</a>
<b>Uniprot ID</b>	<a href="#">H31T_HUMAN</a> <a href="#">H31_HUMAN</a>
<b>Immunogen</b>	ARKST
<b>Immunogen Region</b>	
<b>Specificity</b>	A synthetic monomethylated peptide around K9 of human histone H3 (NP_003520.1).
<b>Immunogen Sequence</b>	ARKST



Immunohistochemistry analysis of paraffin-embedded human colon using MonoMethyl-Histone H3-K9 rabbit polyclonal antibody (STJ23984) at dilution of 1:50 (40x lens). Perform high pressure antigen retrieval with 10 mM citrate buffer pH 6.0 before commencing with immunohistochemistry staining protocol.



Immunohistochemistry analysis of paraffin-embedded mouse lung using MonoMethyl-Histone H3-K9 rabbit polyclonal antibody (STJ23984) at dilution of 1:50 (40x lens). Perform high pressure antigen retrieval with 10 mM citrate buffer pH 6.0 before commencing with immunohistochemistry staining protocol.

This product is suitable for in-vitro studies under the RESEARCH USE ONLY [RUO] licence. This product must not be used as for diagnostic or other medical purposes.  
St John's Laboratory Ltd, Knowledge Dock Business Centre, University Way, London, E16 2RD | Tel: 0208 223 3081