

Anti-Di-Methyl-Histone H4-R3 antibody (2-19) (STJ23979)
STJ23979

GENERAL INFORMATION

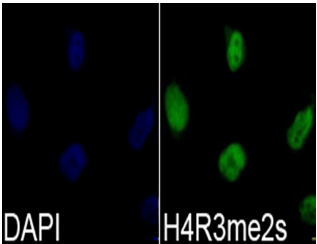
Product Type	Primary antibodies
Short Description	
Applications	WB/DB/IHC-P/IF/ICC/ELISA
Host/Source	Rabbit
Reactivity	Human/Mouse/Rat/Other

PRODUCT PROPERTIES

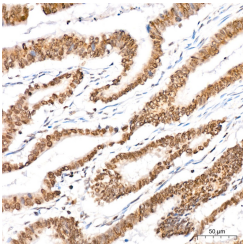
Clonality	Polyclonal
Clone ID	
Concentration	Lot specific
Conjugation	Unconjugated
Purification	Affinity purification
Dilution Range	WB:1:500-1:2000 DB:1:500-1:2000 IHC-P:1:50-1:200 IF/ICC:1:50-1:200 ELISA:Recommended starting concentration is 1 Mu g/mL. Please optimize the concentration based on your specific assay requirements.
Formulation	PBS with 0.09% Sodium Azide, 50% Glycerol, pH 7.3.
Isotype	IgG
Storage Instruction	Store at -20°C for up to 1 year from the date of receipt, and avoid repeat freeze-thaw cycles.

TARGET INFORMATION

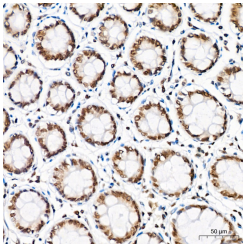
Gene ID	121504/554313/8294/8359/8360/8361/8362/8363/8364/8365/8366/8367/8368/8370
Gene Symbol	H4C1.H4C2.H4C3.H4C4.H4C5.H4C6.H4C8.H4C9.H4C11.H4C12.H4C13.H4C14.H4C15.H4C16
Uniprot ID	H4_HUMAN
Immunogen	
Immunogen	2-19
Region	
Specificity	A synthetic peptide corresponding to a sequence within amino acids 1-100 of human Histone H4 (NP_003529.1).
Immunogen	MSGRGKGGKGLGKGGAHRH KVLRDNIQGITKPAIRRLAR RGGVKRISGLIYEETRGVLK VFLENVIRDAVITYTEHAKRK
Sequence	TVTAMDVYALKRQGRITLYG



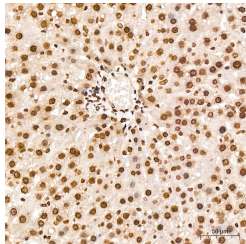
Immunofluorescence analysis of 293T cells using Symmetric DiMethyl-Histone H4-R3 Rabbit polyclonal antibody (STJ23979). Blue: DAPI for nuclear staining.



Immunohistochemistry analysis of Symmetric DiMethyl-Histone H4-R3 in paraffin-embedded human colon carcinoma tissue using Symmetric DiMethyl-Histone H4-R3 Rabbit polyclonal antibody (STJ23979) at a dilution of 1:100 (40x lens). High pressure antigen retrieval was performed with 0.01 M citrate buffer (pH 6.0) prior to immunohistochemistry staining.



Immunohistochemistry analysis of Symmetric DiMethyl-Histone H4-R3 in paraffin-embedded human colon tissue using Symmetric DiMethyl-Histone H4-R3 Rabbit polyclonal antibody (STJ23979) at a dilution of 1:100 (40x lens). High pressure antigen retrieval was performed with 0.01 M citrate buffer (pH 6.0) prior to immunohistochemistry staining.



Immunohistochemistry analysis of Symmetric DiMethyl-Histone H4-R3 in paraffin-embedded rat liver tissue using Symmetric DiMethyl-Histone H4-R3 Rabbit polyclonal antibody (STJ23979) at a dilution of 1:100 (40x lens). High pressure antigen retrieval was performed with 0.01 M citrate buffer (pH 6.0) prior to immunohistochemistry staining.

This product is suitable for in-vitro studies under the RESEARCH USE ONLY [RUO] licence. This product must not be used as for diagnostic or other medical purposes.
St John's Laboratory Ltd, Knowledge Dock Business Centre, University Way, London, E16 2RD | Tel: 0208 223 3081