

Anti-Mono-Methyl-Histone H4-K20 antibody (STJ23970)

STJ23970

GENERAL INFORMATION

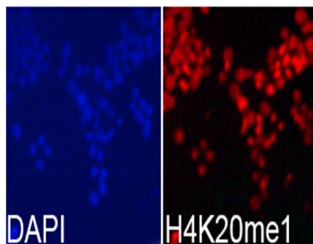
Product Type	Primary antibodies
Short Description	
Applications	WB/DB/IHC-P/IF/ICC/ELISA
Host/Source	Rabbit
Reactivity	Human/Mouse/Rat/Other

PRODUCT PROPERTIES

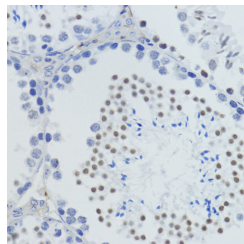
Clonality	Polyclonal
Clone ID	
Concentration	Lot specific
Conjugation	Unconjugated
Purification	Affinity purification
Dilution Range	WB:1:500-1:1000 DB:1:500-1:2000 IHC-P:1:50-1:200 IF/ICC:1:50-1:200 ELISA:Recommended starting concentration is 1 µg/mL. Please optimize the concentration based on your specific assay requirements.
Formulation	PBS with 0.02% Sodium Azide, 50% Glycerol, pH 7.3.
Isotype	IgG
Storage Instruction	Store at -20°C for up to 1 year from the date of receipt, and avoid repeat freeze-thaw cycles.

TARGET INFORMATION

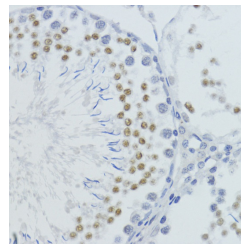
Gene ID	121504/554313/8294/8359/8360/8361/8362/8363/8364/8365/8366/8367/8368/8370
Gene Symbol	H4C1.H4C2.H4C3.H4C4.H4C5.H4C6.H4C8.H4C9.H4C11.H4C12.H4C13.H4C14.H4C15.H4C16
Uniprot ID	H4_HUMAN
Immunogen	HRKVL
Immunogen Region	
Specificity	A synthetic monomethylated peptide around K20 of human Histone H4 (NP_003529.1).
Immunogen Sequence	HRKVL



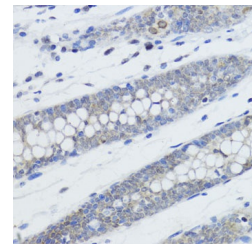
Immunofluorescence analysis of 293T cells using MonoMethyl-Histone H4-K20 Rabbit polyclonal antibody (STJ23970). Blue: DAPI for nuclear staining.



Immunohistochemistry analysis of MonoMethyl-Histone H4-K20 in paraffin-embedded mouse testis using MonoMethyl-Histone H4-K20 Rabbit polyclonal antibody (STJ23970) at dilution of 1:200 (40x lens). Perform microwave antigen retrieval with 10 mM PBS buffer pH 7.2 before commencing with immunohistochemistry staining protocol.



Immunohistochemistry analysis of MonoMethyl-Histone H4-K20 in paraffin-embedded rat testis using MonoMethyl-Histone H4-K20 Rabbit polyclonal antibody (STJ23970) at dilution of 1:200 (40x lens). Perform microwave antigen retrieval with 10 mM PBS buffer pH 7.2 before commencing with immunohistochemistry staining protocol.



Immunohistochemistry analysis of MonoMethyl-Histone H4-K20 in paraffin-embedded human colon using MonoMethyl-Histone H4-K20 Rabbit polyclonal antibody (STJ23970) at dilution of 1:200 (40x lens). Perform microwave antigen retrieval with 10 mM PBS buffer pH 7.2 before commencing with immunohistochemistry staining protocol.

This product is suitable for in-vitro studies under the RESEARCH USE ONLY [RUO] licence. This product must not be used as for diagnostic or other medical purposes.

St John's Laboratory Ltd, Knowledge Dock Business Centre, University Way, London, E16 2RD | Tel: 0208 223 3081