

## Anti-GRB10 antibody (1-100) (STJ23854)

STJ23854

### GENERAL INFORMATION

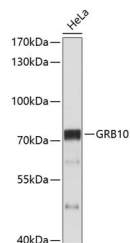
|                          |                    |
|--------------------------|--------------------|
| <b>Product Type</b>      | Primary antibodies |
| <b>Short Description</b> |                    |
| <b>Applications</b>      | WB/ELISA           |
| <b>Host/Source</b>       | Rabbit             |
| <b>Reactivity</b>        | Human              |

### PRODUCT PROPERTIES

|                       |  |
|-----------------------|--|
| <b>Clonality</b>      | Polyclonal   |
| <b>Clone ID</b>       |  |
| <b>Concentration</b>  | Lot specific   |
| <b>Conjugation</b>    | Unconjugated   |
| <b>Purification</b>   | Affinity purification  |
| <b>Dilution Range</b> | WB:1:500-1:1000<br>ELISA:Recommended starting concentration is 1 Mu g/mL. Please optimize the concentration based on your specific assay requirements. |
| <b>Formulation</b>    | PBS with 0.02% Sodium Azide, 50% Glycerol, pH 7.3.   |
| <b>Isotype</b>        | IgG  |
| <b>Storage</b>        | Store at -20°C for up to 1 year from the date of receipt, and avoid repeat freeze-thaw cycles.   |
| <b>Instruction</b>    |  |

### TARGET INFORMATION

|                           |   |
|---------------------------|---|
| <b>Gene ID</b>            | <a href="#">2887</a>  |
| <b>Gene Symbol</b>        | <a href="#">GRB10</a>   |
| <b>Uniprot ID</b>         | <a href="#">GRB10_HUMAN</a>   |
| <b>Immunogen</b>          |   |
| <b>Immunogen Region</b>   | 1-100   |
| <b>Specificity</b>        | A synthetic peptide corresponding to a sequence within amino acids 1-100 of human GRB10 (NP_005302.3).      |
| <b>Immunogen Sequence</b> | MALAGCPDSFLHHPYYQDKV EQTPRSQQDPAGPLPAQSD RLANHQEDDDVDLEALVNDMN ASLESLSACSMQSDTVPLL<br>QNGQHARSQPRASGPPIRISQ |



Western blot analysis of extracts of HeLa cells, using GRB10 antibody (STJ23854) at 1:1000 dilution. Secondary antibody: HRP Goat Anti-Rabbit IgG (H+L) (STJ5000856) at 1:10000 dilution. Lysates/proteins: 25 Mu g per lane. Blocking buffer: 3% nonfat dry milk in TBST. Detection: ECL Basic Kit. Exposure time: 60s.

This product is suitable for in-vitro studies under the RESEARCH USE ONLY [RUO] licence. This product must not be used as for diagnostic or other medical purposes.  
St John's Laboratory Ltd, Knowledge Dock Business Centre, University Way, London, E16 2RD | Tel: 0208 223 3081