

Anti-GNB3 antibody (1-340) (STJ23822)
STJ23822

GENERAL INFORMATION

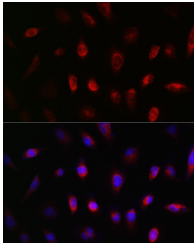
Product Type	Primary antibodies
Short Description	
Applications	WB/IF/ICC/ELISA
Host/Source	Rabbit
Reactivity	Human/Mouse/Rat

PRODUCT PROPERTIES

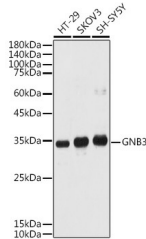
Clonality	Polyclonal
Clone ID	
Concentration	Lot specific
Conjugation	Unconjugated
Purification	Affinity purification
Dilution Range	WB:1:500-1:1000 IF/CC:1:50-1:200 ELISA:Recommended starting concentration is 1 Mu g/mL. Please optimize the concentration based on your specific assay requirements.
Formulation	PBS with 0.05% Proclin300, 50% Glycerol, pH 7.3.
Isotype	IgG
Storage Instruction	Store at -20°C for up to 1 year from the date of receipt, and avoid repeat freeze-thaw cycles.

TARGET INFORMATION

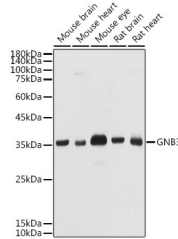
Gene ID	2784
Gene Symbol	GNB3
Uniprot ID	GBB3_HUMAN
Immunogen	
Immunogen Region	1-340
Specificity	Recombinant fusion protein containing a sequence corresponding to amino acids 1-340 of human GNB3 (NP_002066.1).
Immunogen Sequence	MGEMEQLRQEAEQLKKIAD ARKACADVTLAELVSGLEWV GRVQMRTRRTLGRHLAKIYA MHWATDSKLLVSASQDGKLI VWDSYTTNKVHAIPLRSSWV MTCAYAPSGNFVACGGLDNM CSIYNLKSREGNVKVSRELS AHTGYLSCCRFLDDNNIVTS SGGTTTCALWDIETGQQKTVF VGHTGDCMSLAVSPDFNLFI SGACDASAKLWDVREGTCRQ TFTGHESDINAICFFPNGE



Immunofluorescence analysis of U-251MG cells using GNB3 Rabbit polyclonal antibody (STJ23822) at dilution of 1:50 (40x lens). Blue: DAPI for nuclear staining.



Western blot analysis of extracts of various cell lines, using GNB3 antibody (STJ23822) at 1:1000 dilution. Secondary antibody: HRP Goat Anti-Rabbit IgG (H+L) (STJ3000856) at 1:10000 dilution. Lysates/proteins: 25 Mu g per lane. Blocking buffer: 3% nonfat dry milk in TBST. Detection: ECL Basic Kit. Exposure time: 180s.



Western blot analysis of extracts of various cell lines, using GNB3 antibody (STJ23822) at 1:1000 dilution. Secondary antibody: HRP Goat Anti-Rabbit IgG (H+L) (STJ3000856) at 1:10000 dilution. Lysates/proteins: 25 Mu g per lane. Blocking buffer: 3% nonfat dry milk in TBST. Detection: ECL Basic Kit. Exposure time: 10s.

This product is suitable for in-vitro studies under the RESEARCH USE ONLY [RUO] licence. This product must not be used as for diagnostic or other medical purposes.
St John's Laboratory Ltd, Knowledge Dock Business Centre, University Way, London, E16 2RD | Tel: 0208 223 3081