

Anti-GFRA2 antibody (360-464) (STJ23776)

STJ23776

GENERAL INFORMATION

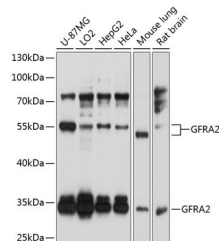
Product Type	Primary antibodies
Short Description	
Applications	WB/ELISA
Host/Source	Rabbit
Reactivity	Human/Mouse/Rat

PRODUCT PROPERTIES

Clonality	Polyclonal
Clone ID	
Concentration	Lot specific
Conjugation	Unconjugated
Purification	Affinity purification
Dilution Range	WB:1:200-1:2000 ELISA:Recommended starting concentration is 1 Mu g/mL. Please optimize the concentration based on your specific assay requirements.
Formulation	PBS with 0.02% Sodium Azide, 50% Glycerol, pH 7.3.
Isotype	IgG
Storage Instruction	Store at -20°C for up to 1 year from the date of receipt, and avoid repeat freeze-thaw cycles.

TARGET INFORMATION

Gene ID	2675
Gene Symbol	GFRA2
Uniprot ID	GFRA2_HUMAN
Immunogen	
Immunogen Region	360-464
Specificity	Recombinant fusion protein containing a sequence corresponding to amino acids 360-464 of human GFRA2 (NP_001486.4).
Immunogen Sequence	DVNVSPKGPSFQATQAPRVE KTPSLPDDLSDSTSLGTSVI TTCTSVQEQGLKANNKSKELS MCFTELTNNIIPGSNKVIKP NSGPSRARPSAALTIVLSVLM LKLAL



Western blot analysis of extracts of various cell lines, using GFRA2 antibody (STJ23776) at 1:1000 dilution. Secondary antibody: HRP Goat Anti-Rabbit IgG (H+L) (STJ5000856) at 1:10000 dilution. Lysates/proteins: 25 Mu g per lane. Blocking buffer: 3% nonfat dry milk in TBST. Detection: ECL Basic Kit. Exposure time: 5s.

This product is suitable for in-vitro studies under the RESEARCH USE ONLY [RUO] licence. This product must not be used as for diagnostic or other medical purposes.
St John's Laboratory Ltd, Knowledge Dock Business Centre, University Way, London, E16 2RD | Tel: 0208 223 3081