

## Anti-GCG antibody (21-180) (STJ23760)

STJ23760

### GENERAL INFORMATION

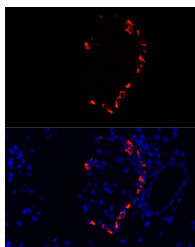
|                          |                    |
|--------------------------|--------------------|
| <b>Product Type</b>      | Primary antibodies |
| <b>Short Description</b> |                    |
| <b>Applications</b>      | IHC-P/IF/ICC/ELISA |
| <b>Host/Source</b>       | Rabbit             |
| <b>Reactivity</b>        | Human/Mouse/Rat    |

### PRODUCT PROPERTIES

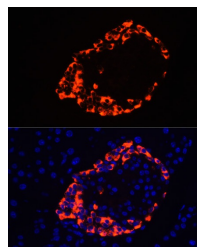
|                      |   |
|----------------------|---|
| <b>Clonality</b>     | Polyclonal  |
| <b>Clone ID</b>      |   |
| <b>Concentration</b> | Lot specific  |
| <b>Conjugation</b>   | Unconjugated  |
| <b>Purification</b>  | Affinity purification   |
| <b>Dilution</b>      | IHC-P:1:100-1:200   |
| <b>Range</b>         | IF/ICC:1:100-1:200  |
|                      | ELISA:Recommended starting concentration is 1 µg/mL. Please optimize the concentration based on your specific assay requirements. |
| <b>Formulation</b>   | PBS with 0.02% Sodium Azide, 50% Glycerol, pH 7.3.  |
| <b>Isotype</b>       | IgG   |
| <b>Storage</b>       | Store at -20°C for up to 1 year from the date of receipt, and avoid repeat freeze-thaw cycles.                                    |
| <b>Instruction</b>   |   |

### TARGET INFORMATION

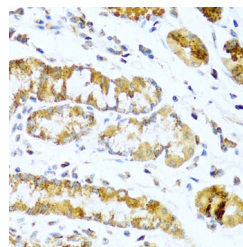
|                           |   |
|---------------------------|---|
| <b>Gene ID</b>            | 2641  |
| <b>Gene Symbol</b>        | GCG   |
| <b>Uniprot ID</b>         | GLUC_HUMAN  |
| <b>Immunogen</b>          |   |
| <b>Immunogen Region</b>   | 21-180  |
| <b>Specificity</b>        | Recombinant fusion protein containing a sequence corresponding to amino acids 21-180 of human Pro-glucagon (NP_002045.1).   |
| <b>Immunogen Sequence</b> | RSLQDTEEKSRFSASQADP LSDPDQMNEKSRHSQGTFTS DYSKYLDSRRAQDFVQWLMN TKRNRNNIAKRHDEFERHAE GTFTSDVSSYLEGQAAKEFI AWLVKGRGRDRFP EEVAIVE ELGRRHADGFSFSD EMTILD NLAARDFINWLIQT KITDRK |



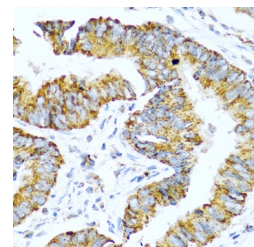
Immunofluorescence analysis of mouse pancreas cells using Pro-glucagon antibody (STJ23760) at dilution of 1:100. Blue: DAPI for nuclear staining.



Immunofluorescence analysis of rat pancreas cells using Pro-glucagon antibody (STJ23760) at dilution of 1:100. Blue: DAPI for nuclear staining.



Immunohistochemistry analysis of paraffin-embedded human stomach using Pro-glucagon antibody (STJ23760) at dilution of 1:100 (40x lens). Perform microwave antigen retrieval with 10 mM PBS buffer pH 7.2 before commencing with immunohistochemistry staining protocol.



Immunohistochemistry analysis of paraffin-embedded human colon carcinoma using Pro-glucagon antibody (STJ23760) at dilution of 1:100 (40x lens). Perform microwave antigen retrieval with 10 mM PBS buffer pH 7.2 before commencing with immunohistochemistry staining protocol.

This product is suitable for in-vitro studies under the RESEARCH USE ONLY [RUO] licence. This product must not be used as for diagnostic or other medical purposes.  
St John's Laboratory Ltd, Knowledge Dock Business Centre, University Way, London, E16 2RD | Tel: 0208 223 3081