

Anti-GATA1 antibody (55-155 aa) (STJ23752)

STJ23752

GENERAL INFORMATION

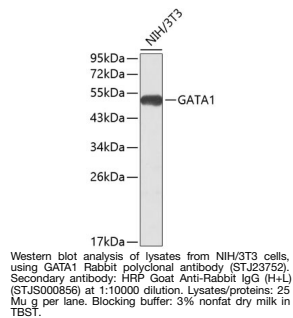
Product Type	Primary antibodies
Short Description	
Applications	WB
Host/Source	Rabbit
Reactivity	Mouse

PRODUCT PROPERTIES

Clonality	Polyclonal
Clone ID	
Concentration	Lot specific
Conjugation	Unconjugated
Purification	Affinity purification
Dilution Range	WB:1:500-1:2000
Formulation	PBS with 0.02% Sodium Azide, 50% Glycerol, pH 7.3.
Isotype	IgG
Storage Instruction	Store at -20°C for up to 1 year from the date of receipt, and avoid repeat freeze-thaw cycles.

TARGET INFORMATION

Gene ID	2623
Gene Symbol	GATA1
Uniprot ID	GATA1_HUMAN
Immunogen	
Immunogen Region	55-155 aa
Specificity	A synthetic peptide corresponding to a sequence within amino acids 55-155 of human GATA1 (NP_002040.1).
Immunogen Sequence	AAAAALAYYRDAEAYRHSPV FQVYPLLNCMEGIPGGSPYA GWAYGKTGLYPASTVCPTRE DSPPQAVEDLDGKGSTSFLE TLKTERLSPDLLTLGPALPS S



This product is suitable for in-vitro studies under the RESEARCH USE ONLY [RUO] licence. This product must not be used as for diagnostic or other medical purposes.
St John's Laboratory Ltd, Knowledge Dock Business Centre, University Way, London, E16 2RD | Tel: 0208 223 3081