

Anti-GAS2 antibody (1-100) (STJ23749)

STJ23749

GENERAL INFORMATION

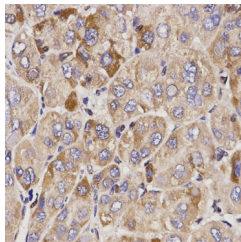
| | |
|--------------------------|--------------------|
| Product Type | Primary antibodies |
| Short Description | |
| Applications | WB/IHC-P/ELISA |
| Host/Source | Rabbit |
| Reactivity | Human/Mouse |

PRODUCT PROPERTIES

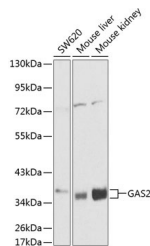
| | |
|-----------------------|--|
| Clonality | Polyclonal |
| Clone ID | |
| Concentration | Lot specific |
| Conjugation | Unconjugated |
| Purification | Affinity purification |
| Dilution Range | WB:1:500-1:2000 IHC-P:1:50-1:200 ELISA:Recommended starting concentration is 1 Mu g/mL. Please optimize the concentration based on your specific assay requirements. |
| Formulation | PBS with 0.02% Sodium Azide, 50% Glycerol, pH 7.3. |
| Isotype | IgG |
| Storage | Store at -20°C for up to 1 year from the date of receipt, and avoid repeat freeze-thaw cycles. |
| Instruction | |

TARGET INFORMATION

| | |
|---------------------------|---|
| Gene ID | 2620 |
| Gene Symbol | GAS2 |
| Uniprot ID | GAS2_HUMAN |
| Immunogen | |
| Immunogen Region | 1-100 |
| Specificity | Recombinant fusion protein containing a sequence corresponding to amino acids 1-100 of human GAS2 (NP_005247.1). MCTALSPKVRSGPGLSDMHQ YSQWLASRHEANLLPMKEDL ALWLTNLLGKEITAETFMKE LDNGALLCQLAETMQEKFKE |
| Immunogen Sequence | SMDANKPTKNLPLKKIPCKT |



Immunohistochemistry analysis of paraffin-embedded human liver cancer using GAS2 antibody (STJ23749) at dilution of 1:200 (40x lens). Perform microwave antigen retrieval with 10 mM PBS buffer pH 7.2 before commencing with immunohistochemistry staining protocol.



Western blot analysis of extracts of various cell lines, using GAS2 antibody (STJ23749) at 1:1000 dilution. Secondary antibody: HRP Goat Anti-Rabbit IgG (H+L) (STJS000856) at 1:10000 dilution. Lysates/proteins: 25 Mu g per lane. Blocking buffer: 3% nonfat dry milk in TBST.