

Anti-FCGR1A antibody (16-288) (STJ23640)

STJ23640

GENERAL INFORMATION

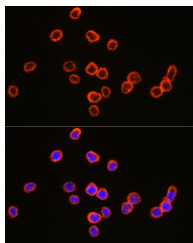
Product Type	Primary antibodies
Short Description	
Applications	WB/IF/ICC/ELISA
Host/Source	Rabbit
Reactivity	Human/Mouse/Rat

PRODUCT PROPERTIES

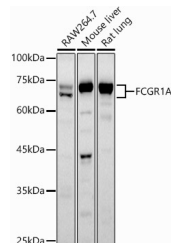
Clonality	Polyclonal
Clone ID	
Concentration	Lot specific
Conjugation	Unconjugated
Purification	Affinity purification
Dilution	WB:1:500-1:1000
Range	IF/CC:1:50-1:200
	ELISA:Recommended starting concentration is 1 Mu g/mL. Please optimize the concentration based on your specific assay requirements.
Formulation	PBS with 0.02% Sodium Azide, 50% Glycerol, pH 7.3.
Isotype	IgG
Storage Instruction	Store at -20°C for up to 1 year from the date of receipt, and avoid repeat freeze-thaw cycles.

TARGET INFORMATION

Gene ID	2209
Gene Symbol	FCGR1A
Uniprot ID	FCGR1_HUMAN
Immunogen	
Immunogen Region	16-288
Specificity	Recombinant fusion protein containing a sequence corresponding to amino acids 16-288 of human CD64 (NP_000557.1).
Immunogen Sequence	QVDTTKAVITLQPPWVSFQ EETVTLHCEVLHLPSSSTQ WFLNGTATQTSTPSYRITSA SVNDSGEYRCQRGLSGRSDP IQLEIHRGWLLQVSSRVFT EGEPLALRCHAWKDKLVYNNV LYYRNGKAFKFFHWNSNLT LKTNISHNGTYHCSGMGKHR YTSAGISVTVKELFPAPVLN ASVTSPLLEGNLVTLSCETK LLLQRPGLQLYFSFYMGSKT LRGRNTSSEYQILTARRED



Immunofluorescence analysis of THP-1 cells using CD64 Rabbit polyclonal antibody (STJ23640) at dilution of 1:100 (40x lens). Blue: DAPI for nuclear staining.



Western blot analysis of extracts of various cell lines, using CD64 antibody (STJ23640) at 1:1000 dilution. Secondary antibody: HRP Goat Anti-Rabbit IgG (H+L) (STJ3000896) at 1:10000 dilution. Lysates/proteins: 25 Mu g per lane. Blocking buffer: 3% nonfat dry milk in TBST. Detection: ECL Basic Kit. Exposure time: 90s.

This product is suitable for in-vitro studies under the RESEARCH USE ONLY [RUO] licence. This product must not be used as for diagnostic or other medical purposes.
St John's Laboratory Ltd, Knowledge Dock Business Centre, University Way, London, E16 2RD | Tel: 0208 223 3081