

Anti-EIF3G antibody (1-320) (STJ23512)
STJ23512

GENERAL INFORMATION

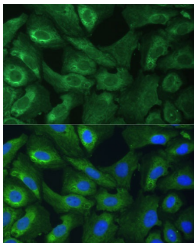
Product Type	Primary antibodies
Short Description	
Applications	WB/IF/ICC/ELISA
Host/Source	Rabbit
Reactivity	Human/Mouse/Rat

PRODUCT PROPERTIES

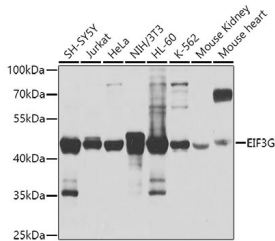
Clonality	Polyclonal
Clone ID	
Concentration	Lot specific
Conjugation	Unconjugated
Purification	Affinity purification
Dilution	WB:1:200-1:2000
Range	IF/CC:1:50-1:200 ELISA:Recommended starting concentration is 1 Mu g/mL. Please optimize the concentration based on your specific assay requirements.
Formulation	PBS with 0.02% Sodium Azide, 50% Glycerol, pH 7.3.
Isotype	IgG
Storage Instruction	Store at -20°C for up to 1 year from the date of receipt, and avoid repeat freeze-thaw cycles.

TARGET INFORMATION

Gene ID	8666
Gene Symbol	EIF3G
Uniprot ID	EIF3G_HUMAN
Immunogen	
Immunogen Region	1-320
Specificity	Recombinant fusion protein containing a sequence corresponding to amino acids 1-320 of human EIF3G (NP_003746.2).
Immunogen Sequence	MPTGDFDSKPSWADQVEEEG EDDKCVTSELLKGIPLATGD TSPEPELLPGAPLPPPEKEI NGNIKTVTYKIDEDGKKFK IVRTFRIETRKASKAVARRK NWKFGNSEFDPPGPNVATT TVSDDVSMTFITSKEDLNCQ EEEDPMNKLKGQKIVSCRIC KGDHWTTTRCPYKDTLGPMQK ELAEQLGLSTGEKEKLPGL EPVQATQNKTGKYVPPSLRD GASRRGESMQPNRRADDNA



Immunofluorescence analysis of U-2 OS cells using EIF3G Polyclonal Antibody (STJ23512) at dilution of 1:100 (40x lens). Blue: DAPI for nuclear staining.



Western blot analysis of extracts of various cell lines, using EIF3G antibody (STJ23512) at 1:1000 dilution. Secondary antibody: HRP Goat Anti-Rabbit IgG (H+L) (STJ3000896) at 1:10000 dilution. Lysates/proteins: 25 Mu g per lane. Blocking buffer: 3% nonfat dry milk in TBST. Detection: ECL Basic Kit. Exposure time: 1s.

This product is suitable for in-vitro studies under the RESEARCH USE ONLY [RUO] licence. This product must not be used as for diagnostic or other medical purposes.
St John's Laboratory Ltd, Knowledge Dock Business Centre, University Way, London, E16 2RD | Tel: 0208 223 3081