

Anti-DUSP6 antibody (302-381) (STJ23447)

STJ23447

GENERAL INFORMATION

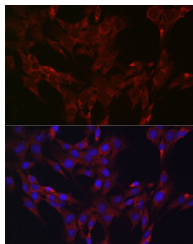
Product Type	Primary antibodies
Short Description	
Applications	WB/IHC-P/IF/ICC/ELISA
Host/Source	Rabbit
Reactivity	Human/Mouse/Rat

PRODUCT PROPERTIES

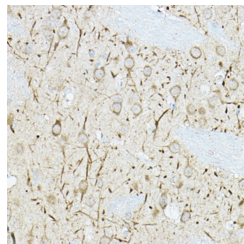
Clonality	Polyclonal
Clone ID	
Concentration	Lot specific
Conjugation	Unconjugated
Purification	Affinity purification
Dilution Range	WB:1:500-1:1000 IHC-P:1:50-1:200 IF/ICC:1:50-1:200 ELISA:Recommended starting concentration is 1 Mu g/mL. Please optimize the concentration based on your specific assay requirements.
Formulation	PBS with 0.09% Sodium Azide, 50% Glycerol, pH 7.3.
Isotype	IgG
Storage Instruction	Store at -20°C for up to 1 year from the date of receipt, and avoid repeat freeze-thaw cycles.

TARGET INFORMATION

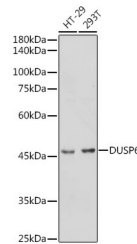
Gene ID	1848
Gene Symbol	DUSP6
Uniprot ID	DUS6_HUMAN
Immunogen	
Immunogen Region	302-381
Specificity	Recombinant fusion protein containing a sequence within amino acids 302-381 of human DUSP6 (NP_001937.2).
Immunogen Sequence	TVTVAYLMLQKLNLMSMNDAYD IVKMKKSNISPNFNFMGQLL DFERTLGLSSPCDNRVPAQQ LYFTTPSNQNVYQVDSLQST



Immunofluorescence analysis of C6 cells using DUSP6 Rabbit polyclonal antibody (STJ23447) at dilution of 1:100 (40x lens). Blue: DAPI for nuclear staining.



Immunohistochemistry analysis of paraffin-embedded rat brain using DUSP6 Rabbit polyclonal antibody (STJ23447) at dilution of 1:100 (40x lens). Perform high pressure antigen retrieval with 10 mM citrate buffer pH 6.0 before commencing with immunohistochemistry staining protocol.



Western blot analysis of extracts of various cell lines, using DUSP6 antibody (STJ23447) at 1:1000 dilution. Secondary antibody: HRP Goat Anti-Rabbit IgG (H+L) (STJS000656) at 1:10000 dilution. Lysates/proteins: 25 Mu g per lane. Blocking buffer: 3% nonfat dry milk in TBST. Detection: ECL Basic Kit. Exposure time: 1s.