

## Anti-DNMT3B antibody (345-853) (STJ23415)

STJ23415

### GENERAL INFORMATION

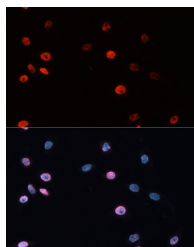
|                          |                    |
|--------------------------|--------------------|
| <b>Product Type</b>      | Primary antibodies |
| <b>Short Description</b> |                    |
| <b>Applications</b>      | WB/IF/ICC/ELISA    |
| <b>Host/Source</b>       | Rabbit             |
| <b>Reactivity</b>        | Human/Mouse/Rat    |

### PRODUCT PROPERTIES

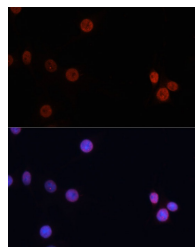
|                            |   |
|----------------------------|---|
| <b>Clonality</b>           | Polyclonal  |
| <b>Clone ID</b>            |   |
| <b>Concentration</b>       | Lot specific  |
| <b>Conjugation</b>         | Unconjugated  |
| <b>Purification</b>        | Affinity purification   |
| <b>Dilution</b>            | WB:1:200-1:1000   |
| <b>Range</b>               | IF/CC:1:50-1:200  |
|                            | ELISA:Recommended starting concentration is 1 Mu g/mL. Please optimize the concentration based on your specific assay requirements. |
| <b>Formulation</b>         | PBS with 0.09% Sodium Azide, 50% Glycerol, pH 7.3.  |
| <b>Isotype</b>             | IgG   |
| <b>Storage Instruction</b> | Store at -20°C for up to 1 year from the date of receipt, and avoid repeat freeze-thaw cycles.                                      |

### TARGET INFORMATION

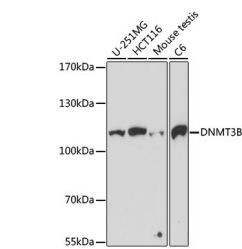
|                           |  |
|---------------------------|--|
| <b>Gene ID</b>            | 1789   |
| <b>Gene Symbol</b>        | DNMT3B   |
| <b>Uniprot ID</b>         | DNM3B_HUMAN  |
| <b>Immunogen</b>          |  |
| <b>Immunogen Region</b>   | 345-853  |
| <b>Specificity</b>        | Recombinant fusion protein containing a sequence corresponding to amino acids 345-475 of human DNMT3B (NP_008823.1).                   |
| <b>Immunogen Sequence</b> | IEGLKPNNTQPVVNKSQVRR AGSRKLESRKYNKTRRRTA DDSATSDYCPAPKRLKTCY NNGKDRGDEQDQSRQMASDV ANKSSLEDGCLSCGRKNPV SFHPLFEGGLCQTCRDRFLE LFYMYDDGQYQ |



Immunofluorescence analysis of HeLa cells using DNMT3B Rabbit polyclonal antibody (STJ23415) at dilution of 100 (40x lens). Secondary antibody: Cy3 Goat Anti-Rabbit IgG (H+L) at 1:500 dilution. Blue: DAPI for nuclear staining.



Immunofluorescence analysis of C6 cells using DNMT3B Rabbit polyclonal antibody (STJ23415) at dilution of 100 (40x lens). Secondary antibody: Cy3 Goat Anti-Rabbit IgG (H+L) at 1:500 dilution. Blue: DAPI for nuclear staining.



Western blot analysis of various lysates using DNMT3B Rabbit polyclonal antibody (STJ23415) at 1:1000 dilution. Secondary antibody: HRP Goat Anti-Rabbit IgG (H+L) (STJ5000856) at 1:10000 dilution. Lysates/proteins: 25 Mu g per lane. Blocking buffer: 3% nonfat dry milk in TBST. Detection: ECL Basic Kit. Exposure time: 3min.

This product is suitable for in-vitro studies under the RESEARCH USE ONLY [RUO] licence. This product must not be used as for diagnostic or other medical purposes.  
St John's Laboratory Ltd, Knowledge Dock Business Centre, University Way, London, E16 2RD | Tel: 0208 223 3081