

Anti-DHFR antibody (1-187) (STJ23375)

STJ23375

GENERAL INFORMATION

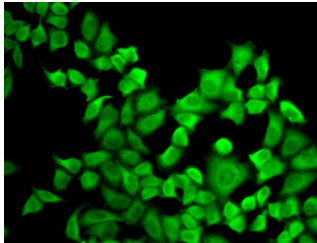
| | |
|--------------------------|--------------------|
| Product Type | Primary antibodies |
| Short Description | |
| Applications | WB/IF/ICC/ELISA |
| Host/Source | Rabbit |
| Reactivity | Human/Mouse |

PRODUCT PROPERTIES

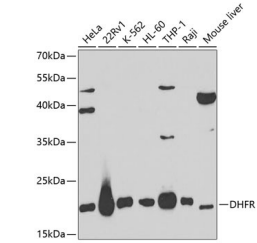
| | |
|----------------------------|---|
| Clonality | Polyclonal |
| Clone ID | |
| Concentration | Lot specific |
| Conjugation | Unconjugated |
| Purification | Affinity purification |
| Dilution | WB:1:500-1:2000 |
| Range | IF/CC:1:50-1:200 |
| | ELISA:Recommended starting concentration is 1 Mu g/mL. Please optimize the concentration based on your specific assay requirements. |
| Formulation | PBS with 0.02% Sodium Azide, 50% Glycerol, pH 7.3. |
| Isotype | IgG |
| Storage Instruction | Store at -20°C for up to 1 year from the date of receipt, and avoid repeat freeze-thaw cycles. |

TARGET INFORMATION

| | |
|---------------------------|---|
| Gene ID | 1719 |
| Gene Symbol | DHFR |
| Uniprot ID | DYR_HUMAN |
| Immunogen | |
| Immunogen Region | 1-187 |
| Specificity | Recombinant fusion protein containing a sequence corresponding to amino acids 1-187 of human DHFR (NP_000782.1). |
| Immunogen Sequence | MVGSLNCIVAVSQNMGIGKN GDLWPPLRNEFFRYFQRM TT TSSVEGKQNLVIMGKKTWFS IPEKNRPLKGRINLVLSREL KEPPQGAHFLSRSLDDALKL TEQPELANKVDMWVIVGGSS VYKEAMNHPGHLKLFVTRIM QDFESDTFFPEIDLEKYKLL PEYPGVLSDVQEEKGIKYKF EYVEKND |



Immunofluorescence analysis of A-549 cells using DHFR antibody (STJ23375).



Western blot analysis of extracts of various cell lines, using DHFR antibody (STJ23375) at 1:1000 dilution. Secondary antibody: HRP Goat Anti-Rabbit IgG (H+L) (STJ3000856) at 1:10000 dilution. Lysates/proteins: 25 Mu g per lane. Blocking buffer: 3% nonfat dry milk in TBST.

This product is suitable for in-vitro studies under the RESEARCH USE ONLY [RUO] licence. This product must not be used as for diagnostic or other medical purposes.
St John's Laboratory Ltd, Knowledge Dock Business Centre, University Way, London, E16 2RD | Tel: 0208 223 3081