

## Anti-DES antibody (1-470) (STJ23369)

STJ23369

### GENERAL INFORMATION

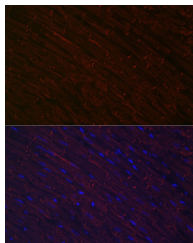
<b>Product Type</b>	Primary antibodies
<b>Short Description</b>	
<b>Applications</b>	WB/IHC-P/IF/ICC/ELISA
<b>Host/Source</b>	Rabbit
<b>Reactivity</b>	Human/Mouse/Rat

### PRODUCT PROPERTIES

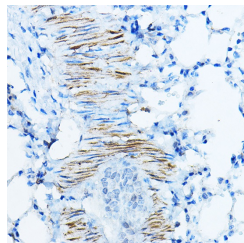
<b>Clonality</b>	Polyclonal
<b>Clone ID</b>	
<b>Concentration</b>	Lot specific
<b>Conjugation</b>	Unconjugated
<b>Purification</b>	Affinity purification
<b>Dilution Range</b>	WB:1:500-1:1000 IHC-P:1:50-1:200 IF/ICC:1:50-1:200 ELISA:Recommended starting concentration is 1 µg/mL. Please optimize the concentration based on your specific assay requirements.
<b>Formulation</b>	PBS with 0.05% Proclin300, 50% Glycerol, pH 7.3.
<b>Isotype</b>	IgG
<b>Storage Instruction</b>	Store at -20°C for up to 1 year from the date of receipt, and avoid repeat freeze-thaw cycles.

### TARGET INFORMATION

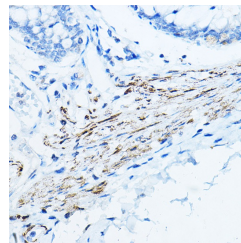
<b>Gene ID</b>	1674
<b>Gene Symbol</b>	DES
<b>Uniprot ID</b>	DESM_HUMAN
<b>Immunogen</b>	
<b>Immunogen Region</b>	1-470
<b>Specificity</b>	Recombinant fusion protein containing a sequence corresponding to amino acids 1-90 of human Desmin (NP_001918.3).
<b>Immunogen Sequence</b>	MSQAYSSSRQVSSYRRTFGG APGFPLGSPVFPVPRAGF GSKGSSSVTSRVYQVSRTS GGAGGLGSLRASRLGTTTRTP SSYGAGELLD



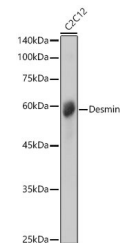
Immunofluorescence analysis of paraffin-embedded rat heart using Desminmin Rabbit polyclonal antibody (STJ23369) at dilution of 1:100 (40x lens). Secondary antibody: Cy3 Goat Anti-Rabbit IgG (H+L) at 1:500 dilution. Blue: DAPI for nuclear staining.



Immunohistochemistry analysis of Desmin in paraffin-embedded mouse lung using Desminmin Rabbit polyclonal antibody (STJ23369) at dilution of 1:100 (40x lens). Perform high pressure antigen retrieval with 10 mM citrate buffer pH 6.0 before commencing with immunohistochemistry staining protocol.



Immunohistochemistry analysis of Desmin in paraffin-embedded human colon using Desminmin Rabbit polyclonal antibody (STJ23369) at dilution of 1:100 (40x lens). Perform high pressure antigen retrieval with 10 mM citrate buffer pH 6.0 before commencing with immunohistochemistry staining protocol.



Western blot analysis of lysates from C2C12 cells using Desminmin Rabbit polyclonal antibody (STJ23369) at 1:1000 dilution. Secondary antibody:HRP Goat Anti-Rabbit IgG (H+L) (STJ5000856) at 1:10000 dilution. Lysates/proteins: 25µg per lane. Blocking buffer: 3% nonfat dry milk in TBST. Detection:ECL Basic Kit. Exposure time:1s.