

Anti-DDIT3 antibody (1-169) (STJ23356)
STJ23356

GENERAL INFORMATION

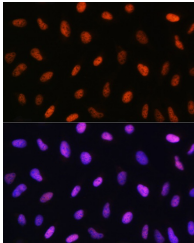
Product Type	Primary antibodies
Short Description	
Applications	WB/IHC-P/IF/ICC/ELISA
Host/Source	Rabbit
Reactivity	Human/Mouse/Rat

PRODUCT PROPERTIES

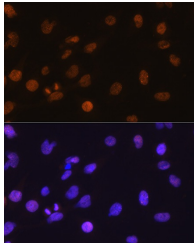
Clonality	Polyclonal
Clone ID	
Concentration	Lot specific
Conjugation	Unconjugated
Purification	Affinity purification
Dilution	WB:1:1000-1:5000
Range	IHC-P:1:50-1:200 IF/ICC:1:50-1:200 ELISA:Recommended starting concentration is 1 μ g/mL. Please optimize the concentration based on your specific assay requirements.
Formulation	PBS with 0.02% Sodium Azide, 50% Glycerol, pH 7.3.
Isotype	IgG
Storage	Store at-20°C for up to 1 year from the date of receipt, and avoid repeat freeze-thaw cycles.
Instruction	

TARGET INFORMATION

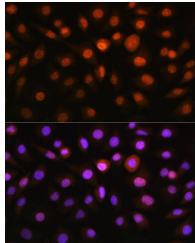
Gene ID	1649
Gene Symbol	DDIT3
Uniprot ID	DDIT3_HUMAN
Immunogen	
Region	1-169
Specificity	Recombinant fusion protein containing a sequence corresponding to amino acids 1-169 of human DDIT3/CHOP (NP_004074.2).
Immunogen Sequence	MAAESLPFSFGLSSWELEA WYEDLQEVLSSENGGTYVS PPGNEEEESKIFTTLDPASL AWLTEEEPEPAEVTSTSQSP HSPDSSQSSLAQEEEEEDQG RTRKRKQSGHSPARAGKQRM KEKEQENERKVAQLAEENER LKQEIERLTREVEATRRLI DRMVNLHQA



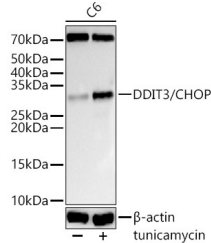
Immunofluorescence analysis of U2OS cells using DDIT3/CHOP Rabbit polyclonal antibody (STJ23356) at dilution of 1:100. Blue: DAPI for nuclear staining.



Immunofluorescence analysis of C6 cells using DDIT3/CHOP Rabbit polyclonal antibody (STJ23356) at dilution of 1:100. Blue: DAPI for nuclear staining.



Immunofluorescence analysis of L929 cells using DDIT3/CHOP Rabbit polyclonal antibody (STJ23356) at dilution of 1:100. Blue: DAPI for nuclear staining.



Western blot analysis of lysates from C6 cells, using DDIT3/CHOP Rabbit polyclonal antibody (STJ23356) at 1:2000 dilution. C6 cells were treated by tunicamycin (2 μ g/ml) for 8 hours. Secondary antibody: HRP Goat Anti-Rabbit IgG (H+L) (STJ5000856) at 1:10000 dilution. Lysates/proteins: 25 μ g per lane. Blocking buffer: 3% nonfat dry milk in TBST. Detection: ECL Basic Kit. Exposure time: 30s.

This product is suitable for in-vitro studies under the RESEARCH USE ONLY [RUO] licence. This product must not be used as for diagnostic or other medical purposes.
St John's Laboratory Ltd, Knowledge Dock Business Centre, University Way, London, E16 2RD | Tel: 0208 223 3081