

Anti-CYR61 antibody (120-220) (STJ23329)

STJ23329

GENERAL INFORMATION

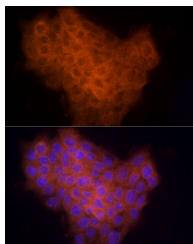
Product Type	Primary antibodies
Short Description	
Applications	WB/IF/ICC/ELISA
Host/Source	Rabbit
Reactivity	Human/Mouse/Rat

PRODUCT PROPERTIES

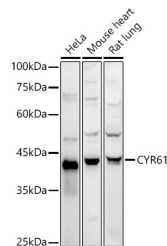
Clonality	Polyclonal
Clone ID	
Concentration	Lot specific
Conjugation	Unconjugated
Purification	Affinity purification
Dilution Range	WB:1:500-1:1000 IF/ICC:1:50-1:200 ELISA:Recommended starting concentration is 1 Mu g/mL. Please optimize the concentration based on your specific assay requirements.
Formulation	PBS with 0.05% Proclin300, 50% Glycerol, pH 7.3.
Isotype	IgG
Storage	Store at -20°C for up to 1 year from the date of receipt, and avoid repeat freeze-thaw cycles.
Instruction	

TARGET INFORMATION

Gene ID	3491
Gene Symbol	CCN1
Uniprot ID	CCN1_HUMAN
Immunogen	
Immunogen Region	120-220
Specificity	A synthetic peptide corresponding to a sequence within amino acids 120-220 of human CYR61 (NP_001545.2).
Immunogen Sequence	QCTCIDGAVGCIPLCPQELS LPNLGCPNPRLVKVTGQCCE EWVCEDESIKDPMEDQDGLL GKELGFDASEVELTRNNELI AVGKGSSSLKRLPVFGMEPRI L



Immunofluorescence analysis of A431 cells using CYR61 Rabbit polyclonal antibody (STJ23329) at dilution of 1:200 (40x lens). Blue: DAPI for nuclear staining.



Western blot analysis of extracts of various cell lines, using CYR61 antibody (STJ23329) at 1:1000 dilution. Secondary antibody: HRP Goat Anti-Rabbit IgG (H+L) (STJS000856) at 1:10000 dilution. Lysates/proteins: 25 Mu g per lane. Blocking buffer: 3% nonfat dry milk in TBST. Detection: ECL Basic Kit. Exposure time: 30s.