

Anti-CXCR3 antibody (289-368) (STJ23303)
STJ23303

GENERAL INFORMATION

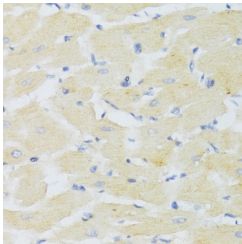
Product Type	Primary antibodies
Short Description	
Applications	WB/IHC-P/ELISA
Host/Source	Rabbit
Reactivity	Human/Mouse

PRODUCT PROPERTIES

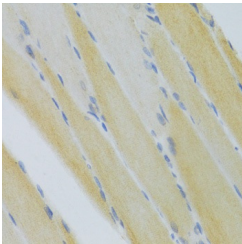
Clonality	Polyclonal
Clone ID	
Concentration	Lot specific
Conjugation	Unconjugated
Purification	Affinity purification
Dilution Range	WB:1:500-1:2000 IHC-P:1:50-1:100 ELISA:Recommended starting concentration is 1 Mu g/mL. Please optimize the concentration based on your specific assay requirements.
Formulation	PBS with 0.01% Thimerosal, 50% Glycerol, pH 7.3.
Isotype	IgG
Storage Instruction	Store at -20°C for up to 1 year from the date of receipt, and avoid repeat freeze-thaw cycles.

TARGET INFORMATION

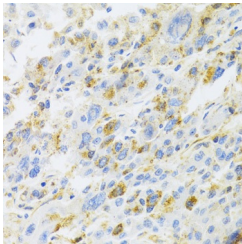
Gene ID	2833
Gene Symbol	CXCR3
Uniprot ID	CXCR3_HUMAN
Immunogen	
Immunogen Region	289-368
Specificity	Recombinant fusion protein containing a sequence corresponding to amino acids 289-368 of human CXCR3 (NP_001495.1).
Immunogen Sequence	NCGRESRVDAKSVTSGLGY MHCCLNPLLYAFVGVKFRER MWMLLLRLGCPNQRGLQRQP SSSRRDSSWSETSEASYSGL



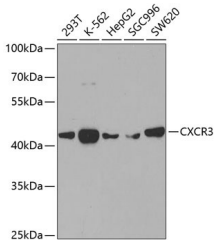
Immunohistochemistry analysis of CXCR3 in paraffin-embedded mouse heart using CXCR3 Rabbit polyclonal antibody (STJ23303) at dilution of 1:100 (40x lens). Perform microwave antigen retrieval with 10 mM PBS buffer pH 7.2 before commencing with immunohistochemistry staining protocol.



Immunohistochemistry analysis of CXCR3 in paraffin-embedded mouse skeletal muscle using CXCR3 Rabbit polyclonal antibody (STJ23303) at dilution of 1:100 (40x lens). Perform microwave antigen retrieval with 10 mM PBS buffer pH 7.2 before commencing with immunohistochemistry staining protocol.



Immunohistochemistry analysis of CXCR3 in paraffin-embedded human liver cancer using CXCR3 Rabbit polyclonal antibody (STJ23303) at dilution of 1:100 (40x lens). Perform microwave antigen retrieval with 10 mM PBS buffer pH 7.2 before commencing with immunohistochemistry staining protocol.



Western blot analysis of various lysates using CXCR3 Rabbit polyclonal antibody (STJ23303) at 1:400 dilution. Secondary antibody: HRP Goat Anti-Rabbit IgG (H+L) (STJS000856) at 1:10000 dilution. Lysates/proteins: 25 Mu g per lane. Blocking buffer: 3% nonfat dry milk in TBST. Detection: ECL Basic Kit. Exposure time: 90s.

This product is suitable for in-vitro studies under the RESEARCH USE ONLY [RUO] licence. This product must not be used as for diagnostic or other medical purposes.
St John's Laboratory Ltd, Knowledge Dock Business Centre, University Way, London, E16 2RD | Tel: 0208 223 3081