

**Anti-CUL4A antibody (1-300) (STJ23293)**  
STJ23293

**GENERAL INFORMATION**

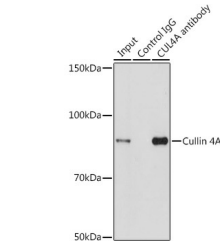
<b>Product Type</b>	Primary antibodies
<b>Short Description</b>	
<b>Applications</b>	WB/IF/ICC/IP/ELISA
<b>Host/Source</b>	Rabbit
<b>Reactivity</b>	Human/Mouse/Rat

**PRODUCT PROPERTIES**

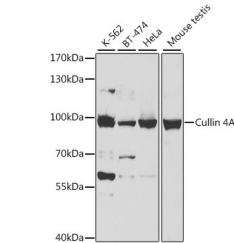
<b>Clonality</b>	Polyclonal
<b>Clone ID</b>	
<b>Concentration</b>	Lot specific
<b>Conjugation</b>	Unconjugated
<b>Purification</b>	Affinity purification
<b>Dilution</b>	WB:1:500-1:2000
<b>Range</b>	IF/CC:1:50-1:100 IP:0.5 Mu g-4 Mu g antibody for 200 Mu g-400 Mu g extracts of whole cells ELISA:Recommended starting concentration is 1 Mu g/mL. Please optimize the concentration based on your specific assay requirements
<b>Formulation</b>	PBS with 0.09% Sodium Azide, 50% Glycerol, pH 7.3.
<b>Isotype</b>	IgG
<b>Storage</b>	Store at-20°C for up to 1 year from the date of receipt, and avoid repeat freeze-thaw cycles.
<b>Instruction</b>	

**TARGET INFORMATION**

<b>Gene ID</b>	8451
<b>Gene Symbol</b>	CUL4A
<b>Uniprot ID</b>	CUL4A_HUMAN
<b>Immunogen</b>	
<b>Immunogen Region</b>	1-300
<b>Specificity</b>	A synthetic peptide corresponding to a sequence within amino acids 1-300 of human Cullin 4A (NP_001008895.1).
<b>Immunogen Sequence</b>	MADEAPRKGSFSAVLVGRITNG LTKPAALAAAPAKPGGAGGS KKLVIKNFRDRPRLPDNYTQ DTWRKLHEAVRAVQSSTSIR YNLEELYQAVENLCSHKVSP MLYKQLRQACEDHVQAQILP FREDSLDSVLFLKKINTCWQ DHCRCQMIMIRSIFLFLDRTY VLQNSTLPSIWDMGLELFRIT HIISDKMVQSKITIDGILLI ERSRSGEAVDRSLRLSLGM LSDLQVYKDSFELKFLEET



Immunoprecipitation analysis of 200 Mu g extracts of HeLa cells using 3 Mu g Cullin 4A antibody (STJ23293). Western blot was performed from the immunoprecipitate using Cullin 4A antibody (STJ23293) at a dilution of 1:1000.



Western blot analysis of various lysates using Cullin 4A Rabbit polyclonal antibody (STJ23293) at 1:500 dilution. Secondary antibody: HRP Goat Anti-Rabbit IgG (H+L) (STJS000856) at 1:10000 dilution. Lysates/proteins: 25 Mu g per lane. Blocking buffer: 3% nonfat dry milk in TBST. Detection: ECL Basic Kit. Exposure time: 5s.

This product is suitable for in-vitro studies under the RESEARCH USE ONLY [RUO] licence. This product must not be used as for diagnostic or other medical purposes.  
St John's Laboratory Ltd, Knowledge Dock Business Centre, University Way, London, E16 2RD | Tel: 0208 223 3081