

## Anti-CTCF antibody (1-260) (STJ23259)

STJ23259

### GENERAL INFORMATION

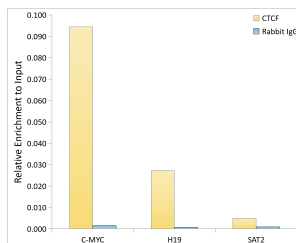
<b>Product Type</b>	Primary antibodies
<b>Short Description</b>	
<b>Applications</b>	WB/IHC-P/IF/ICC/IP/ELISA/ChIP
<b>Host/Source</b>	Rabbit
<b>Reactivity</b>	Human/Mouse/Rat

### PRODUCT PROPERTIES

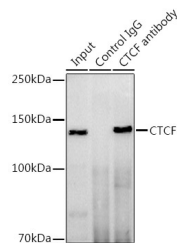
<b>Clonality</b>	Polyclonal
<b>Clone ID</b>	
<b>Concentration</b>	Lot specific
<b>Conjugation</b>	Unconjugated
<b>Purification</b>	Affinity purification
<b>Dilution</b>	WB:1:500-1:1000
<b>Range</b>	IHC-P:1:50-1:200 IF/ICC:1:50-1:200 IP:0.5 Mu g-4 Mu g antibody for 200 Mu g-400 Mu g extracts of whole cells ELISA:Recommended starting concentration is 1 Mu g/mL. Please optimize the concentration based on your specif
<b>Formulation</b>	PBS with 0.09% Sodium Azide, 50% Glycerol, pH 7.3.
<b>Isotype</b>	IgG
<b>Storage</b>	Store at-20°C for up to 1 year from the date of receipt, and avoid repeat freeze-thaw cycles.
<b>Instruction</b>	

### TARGET INFORMATION

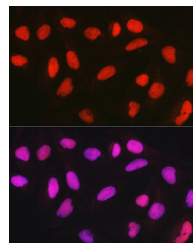
<b>Gene ID</b>	10664
<b>Gene Symbol</b>	CTCF
<b>Uniprot ID</b>	CTCF_HUMAN
<b>Immunogen</b>	
<b>Immunogen Region</b>	1-260
<b>Specificity</b>	Recombinant fusion protein containing a sequence corresponding to amino acids 1-260 of human CTCF (NP_006556.1).
<b>Immunogen Sequence</b>	MEGDAVEAIVEESETFIK GK ERKTYQRRREGGQEEDACHL PQNQTDGGEVVDVNSSVQM VMMEQLDPTLLQMKTEVMEG TVPAEEAAVDDTQIITLQV VNMEEQPINIGELQLVQVPV PVTVPVATTSVEELQGAYEN EVSKEGLAESEPMICHTLPL PEGFQVVKVGANGEVETLEQ GELPPQEDPSWQKDPDYQPP AKKTKTKTKSKLRYTEEGKD VDVSVYDFEEEQQEGLLSE



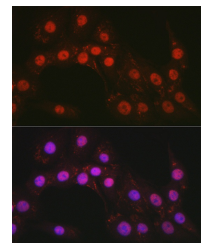
Chromatin immunoprecipitation analysis of extracts of HeLa cells, using CTCF antibody (STJ23259) and rabbit IgG. The amount of immunoprecipitated DNA was checked by quantitative PCR. Histogram was constructed by the ratios of the immunoprecipitated DNA to the input.



Immunoprecipitation analysis of 300 Mu g extracts of HeLa cells using 3 Mu g CTCF antibody (STJ23259). Western blot was performed from the immunoprecipitate using CTCF antibody (STJ23259) at a dilution of 1:500.



Immunofluorescence analysis of U2OS cells using CTCF Rabbit polyclonal antibody (STJ23259) at dilution of 1:50 (40x lens). Secondary antibody: Cy3 Goat Anti-Rabbit IgG (H+L) at 1:500 dilution. Blue: DAPI for nuclear staining.



Immunofluorescence analysis of PC-12 cells using CTCF Rabbit polyclonal antibody (STJ23259) at dilution of 1:50 (40x lens). Secondary antibody: Cy3 Goat Anti-Rabbit IgG (H+L) at 1:500 dilution. Blue: DAPI for nuclear staining.

This product is suitable for in-vitro studies under the RESEARCH USE ONLY [RUO] licence. This product must not be used as for diagnostic or other medical purposes.  
St John's Laboratory Ltd, Knowledge Dock Business Centre, University Way, London, E16 2RD | Tel: 0208 223 3081