

Anti-CSF1R antibody (873-972) (STJ23236)
STJ23236

GENERAL INFORMATION

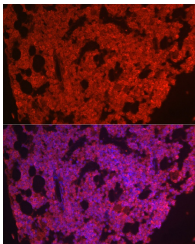
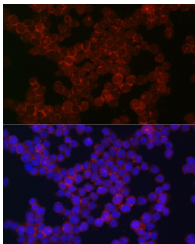
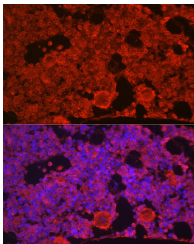
Product Type	Primary antibodies
Short Description	
Applications	WB/IF/ICC/ELISA
Host/Source	Rabbit
Reactivity	Human/Mouse/Rat

PRODUCT PROPERTIES

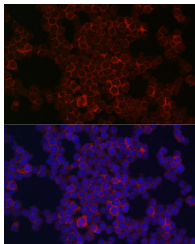
Clonality	Polyclonal
Clone ID	
Concentration	Lot specific
Conjugation	Unconjugated
Purification	Affinity purification
Dilution Range	WB:1:500-1:1000 IF/ICC:1:50-1:200 ELISA:Recommended starting concentration is 1 Mu g/mL. Please optimize the concentration based on your specific assay requirements.
Formulation	PBS with 0.01% Thimerosal, 50% Glycerol, pH 7.3.
Isotype	IgG
Storage	Store at -20°C for up to 1 year from the date of receipt, and avoid repeat freeze-thaw cycles.
Instruction	

TARGET INFORMATION

Gene ID	1436
Gene Symbol	CSF1R
Uniprot ID	CSF1R_HUMAN
Immunogen	
Immunogen Region	873-972
Specificity	A synthetic peptide corresponding to a sequence within amino acids 873-972 of human CD115/CSF-1R (NP_005202.2).
Immunogen Sequence	YQMAQPAFAPKNIYSIMQAC WALEPTHRPTFQQICSLQE QAQEDRRERDYNLPSSSRSGSGSGSSSELEEESSEHLT CCEQGDIAQPLLQPNNYQFC



Immunofluorescence analysis of paraffin-embedded mouse bone marrow using CD115/CSF-1R Rabbit polyclonal antibody (STJ23236) at dilution of 1:100 (40x lens). Secondary antibody: Cy3 Goat Anti-Rabbit IgG (H+L) at 1:500 dilution. Blue: DAPI for nuclear staining.



Immunofluorescence analysis of THP-1 cells using CD115/CSF-1R Rabbit polyclonal antibody (STJ23236) at dilution of 1:100 (40x lens). Secondary antibody: Cy3 Goat Anti-Rabbit IgG (H+L) at 1:500 dilution. Blue: DAPI for nuclear staining.