

Anti-COL3A1 antibody (1201-1301) (STJ23192)
STJ23192

GENERAL INFORMATION

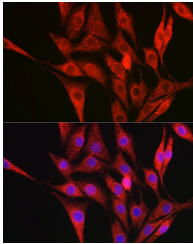
Product Type	Primary antibodies
Short Description	
Applications	WB/IF/ICC/ELISA
Host/Source	Rabbit
Reactivity	Human/Mouse

PRODUCT PROPERTIES

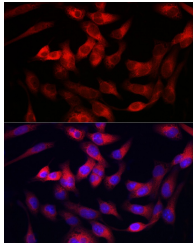
Clonality	Polyclonal
Clone ID	
Concentration	Lot specific
Conjugation	Unconjugated
Purification	Affinity purification
Dilution Range	WB:1:2000-1:10000 IF/ICC:1:50-1:200 ELISA:Recommended starting concentration is 1 Mu g/mL. Please optimize the concentration based on your specific assay requirements.
Formulation	PBS with 0.09% Sodium Azide, 50% Glycerol, pH 7.3.
Isotype	IgG
Storage	Store at -20°C for up to 1 year from the date of receipt, and avoid repeat freeze-thaw cycles.
Instruction	

TARGET INFORMATION

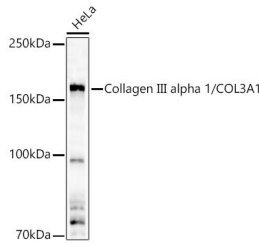
Gene ID	1281
Gene Symbol	COL3A1
Uniprot ID	CO3A1_HUMAN
Immunogen	
Immunogen Region	1201-1301
Specificity	Recombinant fusion protein containing a sequence corresponding to amino acids 1201-1301 of human Collagen III alpha 1/COL3A1 (NP_000081.2).
Immunogen Sequence	GAAAIAGIGGEKAGGFAPYY GDEPMDFKINTDEIMTSLSK VNGQIESLISPDGSRKNPAR NCRDLKFCHPELKSGEYWVD PNQGCKLDAIKVFCNMETGE T



Immunofluorescence analysis of NIH/3T3 cells using Collagen III alpha 1/COL3A1 Rabbit polyclonal antibody (STJ23192) at dilution of 1:100. Secondary antibody: Cy3 Goat Anti-Rabbit IgG (H+L) at 1:500 dilution. Blue: DAPI for nuclear staining.



Immunofluorescence analysis of RD cells using Collagen III alpha 1/COL3A1 Rabbit polyclonal antibody (STJ23192) at dilution of 1:100. Secondary antibody: Cy3 Goat Anti-Rabbit IgG (H+L) at 1:500 dilution. Blue: DAPI for nuclear staining.



Western blot analysis of lysates from HeLa cells using Collagen III alpha 1/COL3A1 Rabbit polyclonal antibody (STJ23192) at a 1:10000 dilution. Secondary antibody:HRP Goat Anti-Rabbit IgG (H+L) (STJS000856) at 1:10000 dilution. Lysates/proteins: 25Å Mu g per lane. Blocking buffer: 3% nonfat dry milk in TBST. Detection: ECL Basic Kit. Exposure time: 90s.

This product is suitable for in-vitro studies under the RESEARCH USE ONLY [RUO] licence. This product must not be used as for diagnostic or other medical purposes.
St John's Laboratory Ltd, Knowledge Dock Business Centre, University Way, London, E16 2RD | Tel: 0208 223 3081