

Anti-CLDN7 antibody (29-211) (STJ23163)

STJ23163

GENERAL INFORMATION

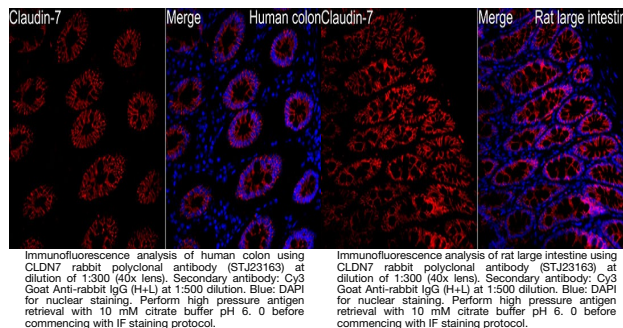
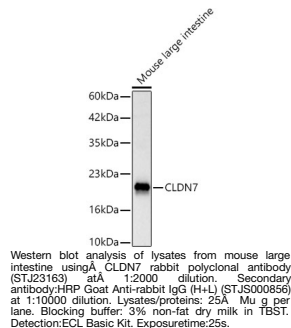
Product Type	Primary antibodies
Short Description	
Applications	WB/IF/ICC/ELISA
Host/Source	Rabbit
Reactivity	Human/Mouse/Rat

PRODUCT PROPERTIES

Clonality	Polyclonal
Clone ID	
Concentration	Lot specific
Conjugation	Unconjugated
Purification	Affinity purification
Dilution	WB:1:1000-1:5000
Range	IF/CC:1:100-1:500
	ELISA:Recommended starting concentration is 1 μ g/mL. Please optimize the concentration based on your specific assay requirements.
Formulation	PBS with 0.02% Sodium Azide, 50% Glycerol, pH 7.3.
Isotype	IgG
Storage Instruction	Store at -20°C for up to 1 year from the date of receipt, and avoid repeat freeze-thaw cycles.

TARGET INFORMATION

Gene ID	1366
Gene Symbol	CLDN7
Uniprot ID	CLD7_HUMAN
Immunogen	
Immunogen Region	29-211
Specificity	Recombinant fusion protein containing a sequence corresponding to amino acids 29-211 of human CLDN7 (NP_001298.3).
Immunogen Sequence	QWQMSSYAGDNIIAQAMYK GLWMDCVTQSTGMMSCMYD SVLALSAALQATRALMVVSL VLGFLAMFVATMGMKCTRCG GDDKVKKARIAMGGGIIIV AGLAALVACSWYGHQIVTDF YNPLIPTNKEYEFGPAIFIG WAGSALVILGGALLSCSCPG NESKAGYRVPRSYPKSNSSK EYV



This product is suitable for in-vitro studies under the RESEARCH USE ONLY [RUO] licence. This product must not be used as for diagnostic or other medical purposes.
St John's Laboratory Ltd, Knowledge Dock Business Centre, University Way, London, E16 2RD | Tel: 0208 223 3081