

Anti-CLDN19 antibody (20-80) (STJ23158)

STJ23158

GENERAL INFORMATION

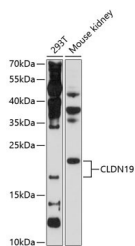
Product Type	Primary antibodies
Short Description	
Applications	WB/ELISA
Host/Source	Rabbit
Reactivity	Human/Mouse

PRODUCT PROPERTIES

Clonality	Polyclonal
Clone ID	
Concentration	Lot specific
Conjugation	Unconjugated
Purification	Affinity purification
Dilution Range	WB:1:500-1:2000 ELISA:Recommended starting concentration is 1 µg/mL. Please optimize the concentration based on your specific assay requirements.
Formulation	PBS with 0.02% Sodium Azide, 50% Glycerol, pH 7.3.
Isotype	IgG
Storage Instruction	Store at -20°C for up to 1 year from the date of receipt, and avoid repeat freeze-thaw cycles.

TARGET INFORMATION

Gene ID	149461
Gene Symbol	CLDN19
Uniprot ID	CLD19_HUMAN
Immunogen	
Immunogen Region	20-80
Specificity	Recombinant fusion protein containing a sequence corresponding to amino acids 20-80 of human CLDN19 (NP_001116867.1).
Immunogen Sequence	GIIASTALPQWKQSSYAGDA IITAVGLYEGLWMSCASQST GQVQCKLYDSLALDGHQIS A



Western blot analysis of extracts of various cell lines, using CLDN19 Antibody (STJ23158) at 1:1000 dilution. Secondary antibody: HRP Goat Anti-rabbit IgG (H+L) at 1:10000 dilution. Lysates/proteins: 25µg per lane. Blocking buffer: 3% nonfat dry milk in TBST. Detection: ECL Basic Kit. Exposure time: 40s.

This product is suitable for in-vitro studies under the RESEARCH USE ONLY [RUO] licence. This product must not be used as for diagnostic or other medical purposes.
St John's Laboratory Ltd, Knowledge Dock Business Centre, University Way, London, E16 2RD | Tel: 0208 223 3081