

Anti-CDX2 antibody (14-313) (STJ23086)

STJ23086

GENERAL INFORMATION

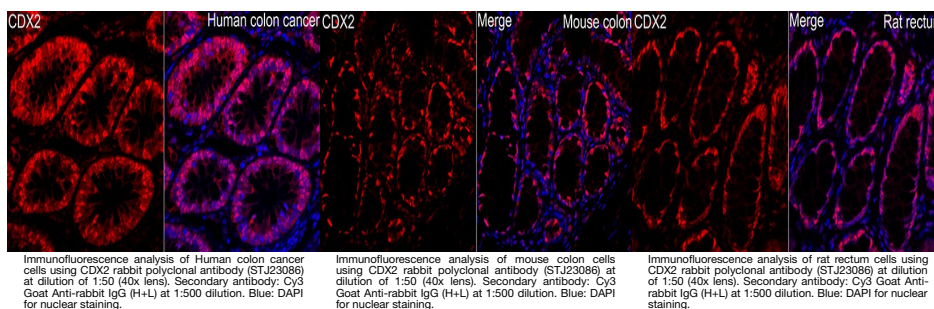
Product Type	Primary antibodies
Short Description	
Applications	WB/IF/ICC/ELISA
Host/Source	Rabbit
Reactivity	Human/Mouse/Rat

PRODUCT PROPERTIES

Clonality	Polyclonal
Clone ID	
Concentration	Lot specific
Conjugation	Unconjugated
Purification	Affinity purification
Dilution	WB: 1:500-1:2000
Range	IF/ICC: 1:50-1:200
	ELISA: Recommended starting concentration is 1 µg/mL. Please optimize the concentration based on your specific assay requirements.
Formulation	PBS with 0.02% Sodium Azide, 50% Glycerol, pH 7.3.
Isotype	IgG
Storage Instruction	Store at -20°C for up to 1 year from the date of receipt, and avoid repeat freeze-thaw cycles.

TARGET INFORMATION

Gene ID	1045
Gene Symbol	CDX2
Uniprot ID	CDX2_HUMAN
Immunogen	
Immunogen Region	14-313
Specificity	Recombinant fusion protein containing a sequence corresponding to amino acids 14-165 of human CDX2 (NP_001256.3).
Immunogen Sequence	YPSSVRHSGGLNLAPQNFVS PPQYPDYGGYHVAIAAAAAAAAA NLDSAQSPGPSWPAAYGAPL REDWNGYAPGGAAAAANAVA HGLNGGSPAAAMGYSSPADY HPHHHHPHHHPHPAAAPSCA SGLLQTLNPGPPGPAATAAAA EQLSPGGQRRNL



This product is suitable for in-vitro studies under the RESEARCH USE ONLY [RUO] licence. This product must not be used as for diagnostic or other medical purposes.
St John's Laboratory Ltd, Knowledge Dock Business Centre, University Way, London, E16 2RD | Tel: 0208 223 3081