

Anti-CDKN2A antibody (1-156) (STJ23076)

STJ23076

GENERAL INFORMATION

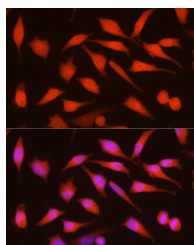
Product Type	Primary antibodies
Short Description	
Applications	WB/IF/ICC/ELISA
Host/Source	Rabbit
Reactivity	Human

PRODUCT PROPERTIES

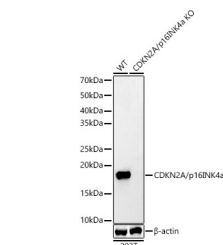
Clonality	Polyclonal
Clone ID	
Concentration	Lot specific
Conjugation	Unconjugated
Purification	Affinity purification
Dilution	WB:1:2000-1:10000
Range	IF/ICC:1:50-1:200
	ELISA:Recommended starting concentration is 1 Mu g/mL. Please optimize the concentration based on your specific assay requirements.
Formulation	PBS with 0.05% Proclin300, 50% Glycerol, pH 7.3.
Isotype	IgG
Storage Instruction	Store at -20°C for up to 1 year from the date of receipt, and avoid repeat freeze-thaw cycles.

TARGET INFORMATION

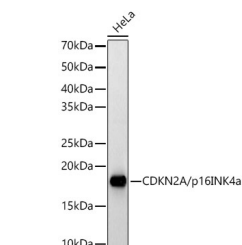
Gene ID	1029
	1029
Gene Symbol	CDKN2A
	CDKN2A
Uniprot ID	CDN2A_HUMAN
	ARF_HUMAN
Immunogen	
Immunogen Region	1-156
Specificity	A synthetic peptide corresponding to a sequence within amino acids 1-156 of human CDKN2A/p16INK4a (NP_000068.1).
Immunogen Sequence	MEPAAGSSMEPSADWLATAA ARGRVEEVRLLEAGALPNA PNSYGRRPIQVMMMG SARVA ELLLLHGAEPNCADPATLTR PVHDAAREGFLDTLVVLHRA GARLDVRDAWGRLPVDLAE LGHRDVARYLRAAAGGTRGS NHARIDAAEGPSDIPD



Immunofluorescence analysis of HeLa cells using [KO Validated] CDKN2A/p16INK4a Rabbit polyclonal antibody (STJ23076) at dilution of 1:200 (40x lens). Secondary antibody: Cy3 Goat Anti-Rabbit IgG (H+L) at 1:500 dilution. Blue: DAPI for nuclear staining.



Western blot analysis of lysates from wild type (WT) and CDKN2A/p16INK4a knockout (KO) 293T (KO) cells, using [KO Validated] CDKN2A/p16INK4a Rabbit polyclonal antibody (STJ23076) at 1:1000 dilution. Secondary antibody: HRP Goat Anti-Rabbit IgG (H+L) (STJS000856) at 1:10000 dilution. Lysates/proteins: 25 Mu g per lane. Blocking buffer: 3% nonfat dry milk in TBST. Detection: ECL Basic Kit. Exposure time: 30s.



Western blot analysis of lysates from HeLa cells, using [KO Validated] CDKN2A/p16INK4a Rabbit polyclonal antibody (STJ23076) at 1:1000 dilution. Secondary antibody: HRP Goat Anti-Rabbit IgG (H+L) (STJS000856) at 1:10000 dilution. Lysates/proteins: 25 Mu g per lane. Blocking buffer: 3% nonfat dry milk in TBST. Detection: ECL Basic Kit. Exposure time: 30s.

This product is suitable for in-vitro studies under the RESEARCH USE ONLY [RUO] licence. This product must not be used as for diagnostic or other medical purposes.
St John's Laboratory Ltd, Knowledge Dock Business Centre, University Way, London, E16 2RD | Tel: 0208 223 3081