

Anti-CDH5 antibody (259-358) (STJ23047)

STJ23047

GENERAL INFORMATION

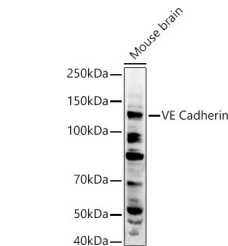
Product Type	Primary antibodies
Short Description	
Applications	WB/ELISA
Host/Source	Rabbit
Reactivity	Human/Mouse

PRODUCT PROPERTIES

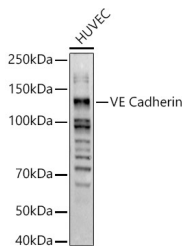
Clonality	Polyclonal
Clone ID	
Concentration	Lot specific
Conjugation	Unconjugated
Purification	Affinity purification
Dilution Range	WB:1:100-1:500 ELISA:Recommended starting concentration is 1 Mu g/mL. Please optimize the concentration based on your specific assay requirements.
Formulation	PBS with 0.02% Sodium Azide, 50% Glycerol, pH 7.3.
Isotype	IgG
Storage Instruction	Store at -20°C for up to 1 year from the date of receipt, and avoid repeat freeze-thaw cycles.

TARGET INFORMATION

Gene ID	1003
Gene Symbol	CDH5
Uniprot ID	CADH5_HUMAN
Immunogen	
Immunogen Region	259-358
Specificity	Recombinant fusion protein containing a sequence corresponding to amino acids 259-358 of human VE Cadherin (NP_001786.2).
Immunogen Sequence	TQTKYTFVVPEDTRVGTSVG SLFVEDPDEPQNRMTKYSIL RGDYQDAFTIETNPANHNEGI IKPMKPLDYEYIQQYSFIVE ATDPTIDLRYMSPAGNRAQ



Western blot analysis of extracts of Mouse brain, using VE Cadherin antibody (STJ23047) at 1:500 dilution. Secondary antibody: HRP Goat Anti-Rabbit IgG (H+L) (STJ5000856) at 1:10000 dilution. Lysates/proteins: 25 Mu g per lane. Blocking buffer: 3% nonfat dry milk in TBST. Detection: ECL Enhanced Kit. Exposure time: 60s.



Western blot analysis of extracts of HUVEC cells, using VE Cadherin antibody (STJ23047) at 1:500 dilution. Secondary antibody: HRP Goat Anti-Rabbit IgG (H+L) (STJ5000856) at 1:10000 dilution. Lysates/proteins: 25 Mu g per lane. Blocking buffer: 3% nonfat dry milk in TBST. Detection: ECL Basic Kit. Exposure time: 60s.

This product is suitable for in-vitro studies under the RESEARCH USE ONLY [RUO] licence. This product must not be used as for diagnostic or other medical purposes.
St John's Laboratory Ltd, Knowledge Dock Business Centre, University Way, London, E16 2RD | Tel: 0208 223 3081