

Anti-CDC20 antibody (1-270) (STJ23022)

STJ23022

GENERAL INFORMATION

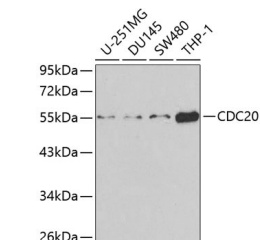
Product Type	Primary antibodies
Short Description	
Applications	WB/IF/ICC/ELISA
Host/Source	Rabbit
Reactivity	Human/Mouse

PRODUCT PROPERTIES

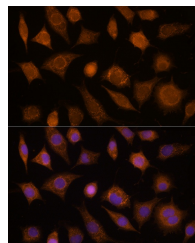
Clonality	Polyclonal
Clone ID	
Concentration	Lot specific
Conjugation	Unconjugated
Purification	Affinity purification
Dilution	WB:1:500-1:2000
Range	IF/CC:1:50-1:200
	ELISA:Recommended starting concentration is 1 μ g/mL. Please optimize the concentration based on your specific assay requirements.
Formulation	PBS with 0.02% Sodium Azide, 50% Glycerol, pH 7.3.
Isotype	IgG
Storage Instruction	Store at -20°C for up to 1 year from the date of receipt, and avoid repeat freeze-thaw cycles.

TARGET INFORMATION

Gene ID	991
Gene Symbol	CDC20
Uniprot ID	CDC20_HUMAN
Immunogen	
Immunogen Region	1-270
Specificity	Recombinant fusion protein containing a sequence corresponding to amino acids 1-270 of human CDC20 (NP_001246.2).
Immunogen Sequence	MAQFAFESDLHSLQLDAPI PNAPPARWQRKAKEAAGPAP SPMRAANRSHSAGRTPGRTP GKSSSKVQTTPSKPGGDRYI PHRSAAQMEVASFLLSKENQ PENSQTPTKKEHQKAWALNL NGFDVEEAKILRLSGKPQNA PEGYQNRLLKVLYSQKATPGS SRKTCRYIPSLPDRILDAPE IRNDYYLNLVDWSSGNVLAV ALDNSVYLWSASSGDILQLL QMEQPGEYISSVAWIKEGN



Western blot analysis of extracts of various cell lines, using CDC20 antibody (STJ23022) at 1:1000 dilution. Secondary antibody: HRP Goat Anti-rabbit IgG (H+L) (STJ5000856) at 1:10000 dilution. Lysates/proteins: 25 μ g per lane. Blocking buffer: 3% non-fat dry milk in TBST.



Immunofluorescence analysis of L929 cells using CDC20 rabbit polyclonal antibody (STJ23022) at dilution of 100 (40x lens). Blue: DAPI for nuclear staining.

This product is suitable for in-vitro studies under the RESEARCH USE ONLY [RUO] licence. This product must not be used as for diagnostic or other medical purposes.
St John's Laboratory Ltd, Knowledge Dock Business Centre, University Way, London, E16 2RD | Tel: 0208 223 3081